



**HIGH-TEMPERATURE
3/4" INTEGRA® VALVE**

*For high-temperature, ultrapure
chemical applications*



for high-temperature, ultra-pure chemical handling

Overview

The Entegris 3/4" Integra® valve is designed for high-temperature, ultrapure chemical handling, yet has the same high-flow capabilities and small footprint as the original 3/4" Integra valve. Key material selections and material isolation allow this valve to reach higher temperatures than competitive valves. The valve can be used for applications up to 180°C (356°F). This can be especially useful for photoresist stripping applications with high-temperature sulfuric and phosphoric acid. The high-temperature 3/4" Integra valve has the ability to support systems in a cost-effective and reliable package. This valve is differentiated from other Integra valves by the yellow actuation indicator on top of the valve.

Applications

- High-temperature, ultrapure chemical handling

Features and Benefits

- Capable of media temperatures up to 180°C (356°F) at 206.9 kPa (30 PSIG)
- Long life cycle
- Small footprint
- Available in molded 2-way or machined sampling valve versions, normally open and normally closed actuators
- Offered with 3/4" and 1" PureBond® fusible pipe and molded Pillar® S300 versions
- Pressure rating remains the same for both inlet and outlet ports

Specifications

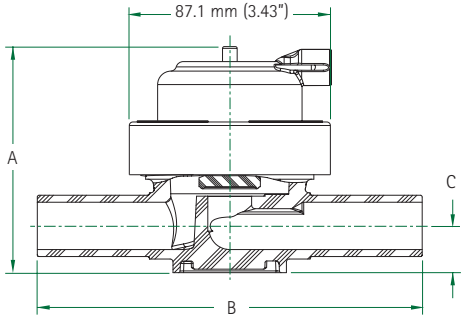
Materials:	Wetted parts	PFA or PTFE
	Exterior parts	PVDF
Pressure range:	29" HG vacuum (980 mbar)	
	551.6 kPa (80 PSIG) maximum rating at inlet or outlet port (see performance data)*	
Temperature range:	21°–49°C (70°–120°F), ambient	
	21°–180°C (70°–356°F), fluid	
Pneumatic supply pressure:	Normally closed	448.2 kPa (65 PSIG) minimum to 551.6 kPa (80 PSIG) maximum
	Normally open	448.2 kPa (65 PSIG) minimum to 482.6 kPa (70 PSIG) maximum
Pneumatic supply port:	1/8" FNPT	

*Actual valve performance varies with pressure and temperature. Refer to actual ratings in performance charts.

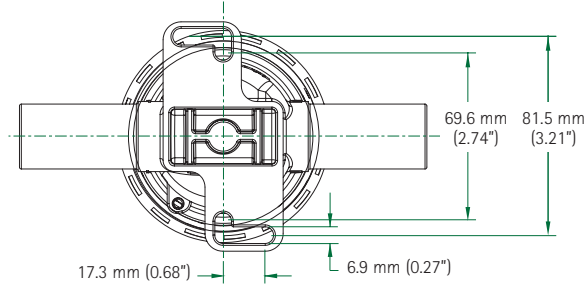
Dimensions

Integra DH12 2-way Valve

SIDE VIEW



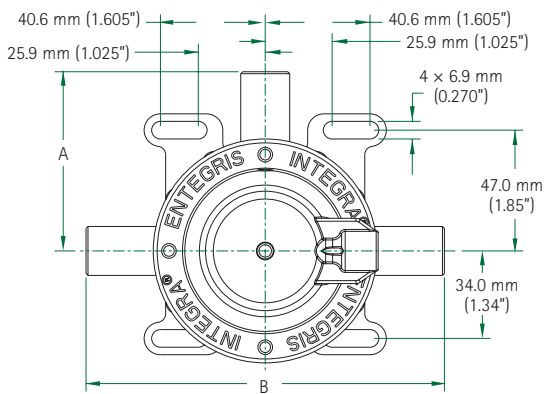
BOTTOM VIEW



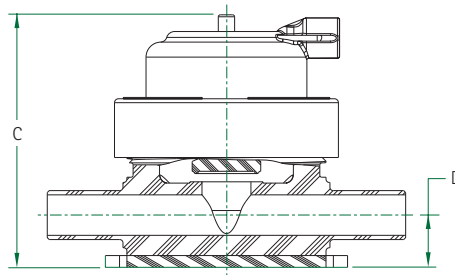
Port Connection	Flow Factor C _v	Dimensions		
		A	B	C
3/4" PureBond	7.4	98.3 mm (3.87")	167.4 mm (6.59")	20.3 mm (0.80")
1" PureBond	9.8	107.4 mm (4.23")	167.4 mm (6.59")	24.4 mm (0.96")
3/4" Pillar S300 (w/out nuts)	6.1	98.3 mm (3.87")	133.4 mm (5.25")	20.3 mm (0.80")
1" Pillar S300 (w/out nuts)	8.8	109.7 mm (4.32")	146.1 mm (5.75")	26.3 mm (1.05")
3/4" Tube stub	6.1	98.3 mm (3.87")	128.8 mm (5.07")	20.3 mm (0.80")
1" Tube stub	8.8	107.4 mm (4.23")	145.8 mm (5.74")	24.4 mm (0.96")

Integra DH12 Sampling Valve

TOP VIEW

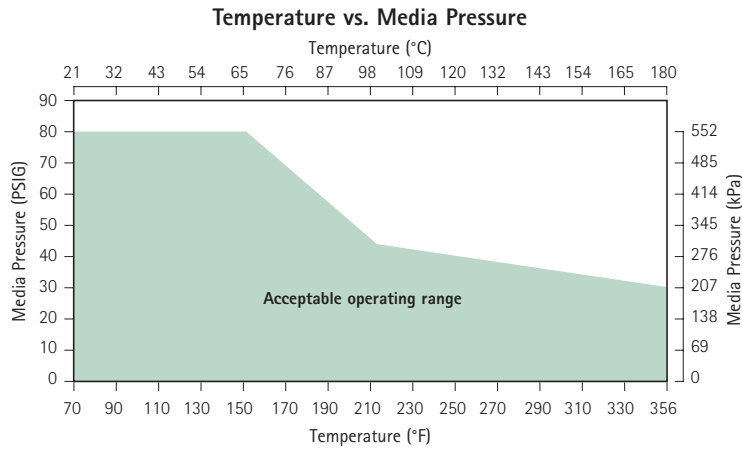


SIDE VIEW



Port Connection	Flow Factor C _v	Dimensions			
		A	B	C	D
3/4" PureBond	7.4	59.4 mm (2.34")	118.6 mm (4.67")	98.3 mm (3.87")	20.3 mm (0.80")
1" PureBond	9.8	59.4 mm (2.34")	118.6 mm (4.67")	107.4 mm (4.23")	24.4 mm (0.96")
3/4" Tube stub	6.1	69.9 mm (2.75")	139.5 mm (5.49")	98.3 mm (3.87")	20.3 mm (0.80")
1" Tube stub	8.8	79.5 mm (3.13")	158.8 mm (6.25")	107.4 mm (4.23")	24.4 mm (0.96")

Performance Data



Ordering Information

High-temperature 3/4" Integra Valves, 2-way

Part Number

DH12 - - - - -

Port Connection

- 12P = 3/4" PureBond
- 16P = 1" PureBond
- 12PS3 = 3/4" Pillar S300*
- 16PS3 = 1" Pillar S300*
- 12F-TS = 3/4" Tube stub
- 16F-TS = 1" Tube stub

Description

- 2C = 2-way, normally closed
- 2U = 2-way, normally open

High-temperature 3/4" Integra Valves, Sampling

Part Number

DH12 - - - - -

Port Connection

- 12P12P-A = 3/4" PureBond all ports
- 16P16P-A = 1" PureBond all ports
- 1212-TSA = 3/4" Tube stub all ports
- 1616-TSA = 1" Tube stub all ports

Description

- SC = 2-way, normally closed
- SU = 2-way, normally open

*Pillar S300 nuts, inserts and gauge rings ordered separately

For More Information

Please call your Regional Customer Service Center today to learn what Entegris can do for you. Visit www.entegris.com and select the "Customer Service" link for the center nearest you.

Terms and Conditions of Sale

All purchases are subject to Entegris' "Terms and Conditions of Sale." To view and print this information, visit Entegris' website at www.entegris.com and select the Legal Notices link from the footer found on the home page.

Entegris®, Integra® and PureBond® are registered trademarks of Entegris, Inc.
Pillar® is a registered trademark of Nippon Pillar Packaging Company, Ltd.

ENTEGRIS, INC.

Corporate Headquarters | 3500 Lyman Boulevard | Chaska, Minnesota 55318 USA
Customer Service Tel. +1 952-556-4181 | Customer Service Fax +1 952-556-8022
www.entegris.com