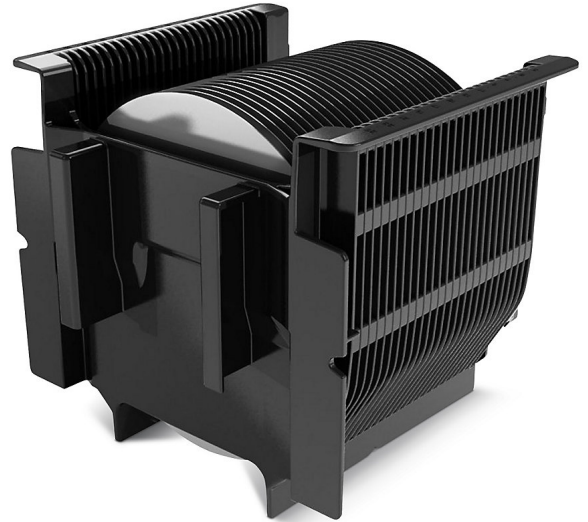


200 Series 200 mm Wafer Transport Carriers

Reliable performance for automated material handling system (AMHS) applications



Provides secure wafer protection and guards against contamination.

With over 50 years of experience in advanced wafer handling and transport, Entegris continues to provide safe and reliable 200 mm wafer processing solutions. Our 200 Series 200 mm wafer transport carriers address automation, contamination control, and productivity requirements for today's 200 mm fabs. These wafer carriers, designed for advanced wafer transport, provide precise wafer access, reliable equipment operation, and secure wafer protection.

APPLICATIONS

- In-fab transport
- Process tool interface
- Storage of fab wafers

FEATURES & BENEFITS

Predictable wafer location	Enables precise wafer access
Automated handling	Enables reliable equipment operation on process tools and automated materials handling systems
Advanced wafer carrier design and materials of construction	Secures and protects wafer against contamination and damage

SPECIFICATIONS

Wafer capacity	26	K200-83M-97C02, KA200-81M-47C02, KA200-81MF-47C02, PA200-81MBK-0615
	25	All others
Pins and holes	on top rail (unless noted)	
Locating track notches	at center of the 13th pocket	
Side walls	Open, closed	
Compatible storage boxes	E99, E210, HA200	KA200-85MH-47C02
	E210, HA200	KA200-85MT-47C02, PA200-80MT-61C02
	E210	All others

Material Specifications

STAT-PRO® 9000	Next Generation advanced wafer transport carrier material	
	Static dissipative blend of Carbon Nanotube (CNT) enhanced polyetheretherketone (PEEK™) carbon compound	
	Temperature limits:	120°C (248°F) continuous use 340°C (644°F) wafer insertion
STAT-PRO 3000	Advanced wafer transport carrier material	
	Static dissipative blend of PEEK and carbon fiber	
	Temperature limits:	120°C (248°F) continuous use 340°C (644°F) wafer insertion
STAT-PRO 100	Wafer transport carrier material	
	Static dissipative blend of polypropylene (PP) and carbon powder	
	Temperature limits:	55°C (131°F) continuous use 70°C (158°F) wafer insertion
Blue Polypropylene	Wafer transport carrier material	
	PP with added colorant	
	Temperature limits:	55°C (131°F) continuous use 70°C (158°F) wafer insertion
FluoroSentry®	Wafer transport carrier material	
	Advanced blend of polybutyleneterephthalate (PBT) and carbon fiber	
	Temperature limits:	55°C (131°F) continuous use 95°C (203°F) wafer insertion

ORDERING INFORMATION

PART NUMBER	WAFER CAPACITY	END WALL HANDLE TYPE	COLOR	ID OPTION	MATERIALS	END WALL FLANGE TYPE	PINS AND HOLES	SIDE WALL
FA200-85MT-7902	25	N/A	Black	None	FluoroSentry®	C-style outboard	Yes	Open
FA200-85MTRM-7902	25	N/A	Black	RFID	FluoroSentry®	C-style outboard	Yes	Open
K200-79MDT1-97C02	25	N/A	Black	None	STAT-PRO® 9000	Wide outboard, inboard flanges	No	Open
K200-79MTH1-97C02	25	Standard, high position	Black	None	STAT-PRO® 9000	C-style outboard	No	Open
K200-79MTHP-97C02	25	Standard, high position	Black	None	STAT-PRO® 9000	C-style outboard	Yes	Open
K200-83M-97C02	26	N/A	Black	None	STAT-PRO® 9000	C-style outboard	Yes	Closed with bottom wash slots
KA200-80MH-47C02	25	Standard, high position	Black	None	STAT-PRO® 3000	Wide outboard, 45° angle	No	Open
KA200-80MH-47C05	25	Standard, high position	Green	None	STAT-PRO® 3000	Wide outboard, 45° angle	No	Open
KA200-80MHR1-47C02	25	Standard, high position	Black	RFID	STAT-PRO® 3000	Wide outboard, 45° angle	No	Open
KA200-81M-47C02	26	N/A	Black	Cardholder, Molded In	STAT-PRO® 3000	Standard outboard	No	Closed with bottom wash slots
KA200-81MF-47C02	26	N/A	Black	Cardholder, Molded In	STAT-PRO® 3000	Wide outboard, 45° angle	No	Closed with bottom wash slots
KA200-85MH-47C02	25	Standard, high position	Black	None	STAT-PRO® 3000	Wide outboard, 45° angle	No	Open
KA200-85MIM-47C02	25	N/A	Black	Cardholder, Tall Pinch Style	STAT-PRO® 3000	Wide outboard, inboard flanges	No	Open

ORDERING INFORMATION

PART NUMBER	WAFER CAPACITY	END WALL HANDLE TYPE	COLOR	ID OPTION	MATERIALS	END WALL FLANGE TYPE	PINS AND HOLES	SIDE WALL
KA200-85MT-47C02	25	N/A	Black	None	STAT-PRO® 3000	C-style outboard	Yes	Open
KA200-85MTH-47C02	25	Large size, high position	Black	None	STAT-PRO® 3000	C-style outboard	Yes	Open
PA200-79MDT-61C02	25	N/A	Black	Cardholder, Tall Pinch Style	STAT-PRO® 100	Wide outboard, inboard flanges	No	Open
PA200-79MDTH-61C02	25	Standard, high position	Black	Cardholder, Tall Pinch Style	STAT-PRO® 100	Wide outboard, inboard flanges	No	Open
PA200-80MD-61C02	25	N/A	Black	None	STAT-PRO® 100	Wide outboard, inboard flanges	No	Open
PA200-80MG-61C02	25	Large size, high position	Black	None	STAT-PRO® 100	C-style outboard	Yes	Open
PA200-80MT-0603	25	N/A	Blue	None	Polypropylene	C-style outboard	Yes	Open
PA200-80MT-61C02	25	N/A	Black	None	STAT-PRO® 100	C-style outboard	Yes	Open
PA200-80MTF-61C02	25	N/A	Black	None	STAT-PRO® 100	C-style outboard	Yes	Open
PA200-81MBK-0615	26	N/A	Natural/Translucent	Barcode	Polypropylene	Standard outboard	No	Closed with bottom wash slots

FOR MORE INFORMATION

Please call your Regional Customer Service Center today to learn what Entegris can do for you. Visit [entegris.com](https://www.entegris.com) and select the [Contact Us](#) link to find the customer service center nearest you.

TERMS AND CONDITIONS OF SALE

All purchases are subject to Entegris' Terms and Conditions of Sale. To view and print this information, visit [entegris.com](https://www.entegris.com) and select the [Terms & Conditions](#) link in the footer.



Corporate Headquarters
129 Concord
Billerica, MA 01821
USA

Customer Service
Tel +1 952 556 4181
Fax +1 952 556 8022
Toll Free 800 394 4083

Entegris®, the Entegris Rings Design®, and other product names are trademarks of Entegris, Inc. as listed on [entegris.com/trademarks](https://www.entegris.com/trademarks). All third-party product names, logos, and company names are trademarks or registered trademarks of their respective owners. Use of them does not imply any affiliation, sponsorship, or endorsement by the trademark owner.

©2001-2022 Entegris, Inc. | All rights reserved. | Printed in the USA | 1110-5412DSA-0922