



**ACCUFLO™
NEEDLE VALVE**

The all plastic, 10-turn needle valve enables smoother adjustment, more accurate flow and easier installation.



Unrivaled Precision

Entegris leads the industry with a broad product offering, advanced manufacturing capabilities, worldwide infrastructure and unmatched technical expertise. Putting to use more than 30 years of experience, we have designed yet another innovative solution for providing consistent and safe delivery of sophisticated chemicals. Entegris introduces a needle valve that enables precise and reliable flow adjustment. Configured as a 10-turn manual valve, the Accuflo™ needle valve provides unrivaled control and precision in applications requiring adjusted flow such as sampling corrosive chemicals, dispensing photoresist or DI water, or “spiking” wet bench media.

All-Plastic Construction

The Accuflo™ needle valve is constructed from TEFLON® PFA and HyQ PTFE materials – allowing for a cleaner overall process. Because of the all-polymer construction, this valve is able to withstand applications involving corrosive materials or environments. The corrosion-resistant properties of TEFLON® PFA and HyQ PTFE also give you a longer product life with less maintenance, resulting in a considerable cost advantage over exotic metal alternatives.

Panel Mount Design

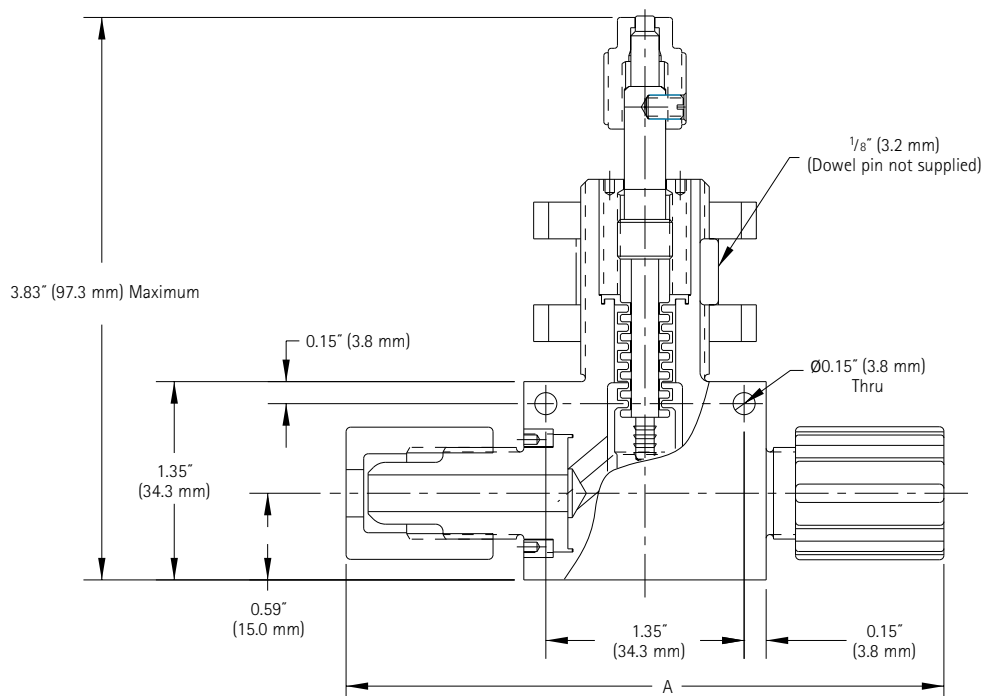
A panel mount configuration makes the valve easy to install and maintain. Secondary mounting holes were also designed into the valve for surface mount or stackable applications. The Accuflo™ needle valve has a 1/4" orifice and is available with a straight-through flow design and various port connections. Customized right angle (90°) configurations are available upon request.

Ordering Information

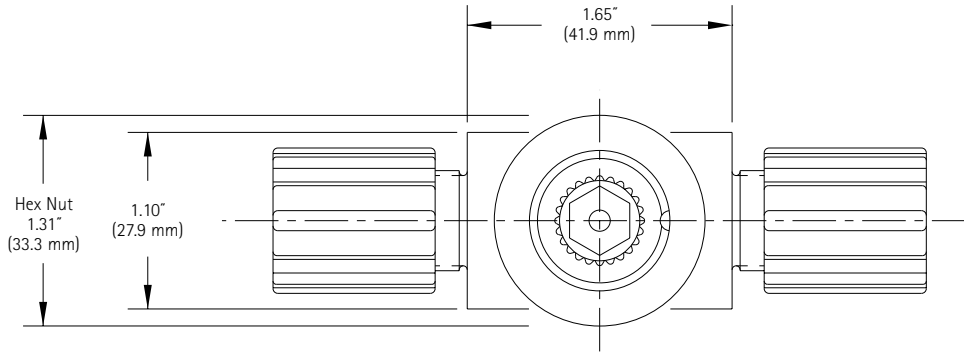
Part Number*	Orifice	Port Connection	Dimension A
NV410-06Q-1	1/4"	3/8" Quikgrip®	3.08" (78.2 mm)
NV410-06F-1	1/4"	3/8" Flaretek® (replaceable)	4.07" (103.4 mm)
NV410-04N-1	1/4"	1/4" FNPT	1.65" (41.9 mm)

*To order 90° flow path, order a -2 instead of -1.

Dimensions

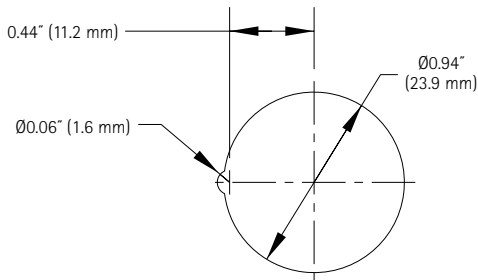


Top View



Mounting Information

Panel Mount Hole



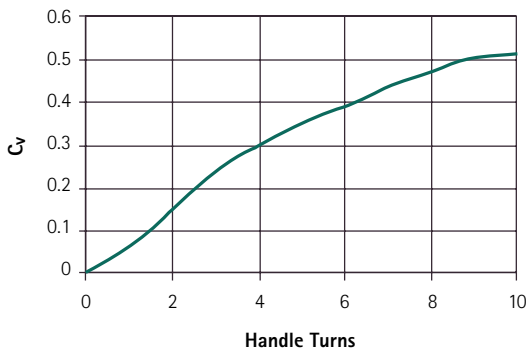
Panel Mount Instructions – Panel thickness is 1.00" (25.4 mm) maximum. To install valve, remove the panel mount nut and insert valve into the panel. Thread the panel mount nut onto the valve and tighten nut to 40 inch•lbs (4.5N•m) torque, or 1/8-turn beyond hand tight.

Specifications

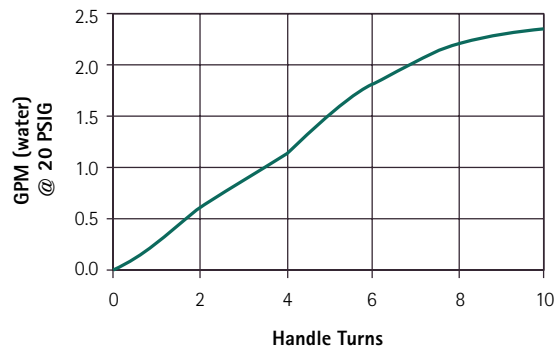
Temperature range:	-60° to 150°F (-51° to 66°C), ambient -60° to 212°F (-51° to 100°C), media
Media pressure:	27" Hg vacuum to 75 PSIG (483 kPa) at room temperature
Materials:	All wetted parts are PFA and PTFE. Exterior parts are PVDF and polypropylene.
Typical flow factor:	.52 C _v (7.4 K _v) fully open

Performance Data

Typical Handle Turns vs. C_v for 1/4" Accuflo™ Needle Valve



Typical Handle Turns vs. GPM for 1/4" Accuflo™ Needle Valve



For More Information

For more information on Accuflo™ Needle Valves contact your local Entegris distributor or Entegris, Inc.

To review our complete line of fluid handling products, log on to www.cfmsolutions.com or contact Entegris Customer Service for your free *Fluid Handling Products* catalog on CD-ROM.

Terms and Conditions of Sale

AGREEMENT – Entegris expressly limits acceptance to the prices, conditions and terms set forth in this document. Buyer's terms and conditions of purchase shall not apply.

CANCELLATION PRIOR TO SHIPMENT – Entegris may, on a discretionary case-by-case basis, charge Buyer cancellation charges for orders which are cancelled prior to shipment. Buyer should contact their Entegris customer service representative to determine the effect of an order cancellation.

PERFORMANCE – Unless otherwise agreed to in writing, Entegris reserves the right to make design changes which Entegris believes will improve its products. Entegris may also satisfy customer purchase orders by shipping 90-100% of ordered quantities for nonstandard products when shipping lesser quantities provides Entegris operational efficiencies. Entegris shall only charge Buyer for actual quantities shipped. Entegris' performance shall be excused in the event of strikes, accidents, fires, unavailability of materials and all other causes beyond the control of Entegris.

CLAIMS AND RETURNS – Claims for shortages or inaccurate filling of orders must be made to Entegris within thirty (30) days after receipt of goods. All returns must have an accompanying return authorization number issued by Entegris. Returned goods will be accepted only with prior written approval from Entegris and must be returned in unused, resalable condition and in the original packaging and must be at the current revision level. Entegris may charge a reasonable restocking charge on any items which it accepts that are returned for credit or exchange when the error is not Entegris'.

TOOL OWNERSHIP – All tools, dies and patterns produced by or at the request of Entegris shall remain the exclusive property of Entegris. Entegris reserves the right to advertise and/or sell any of the foregoing items and any of its products unless otherwise agreed to in writing by Entegris.

WARRANTY – Entegris warrants each new product against defects in materials and workmanship for the following periods of time from shipment: Microelectronics Group products, Custom products – 90 days; Entegris™ Cleaning Systems and AutoPod™ Wafer Carriers – 1 year; Fluid Handling Group products (except as separately identified below) including FluoroPure® Chemical Container products – 1 year; Sheeted Chemical Container products and FluoroPure® PFA Liners (blistering, cracking or leakage only) – 18 months; FluoroPure® o-rings and gasket materials – 90 days. Entegris makes no warranty, express or implied, with respect to any components, products or services provided by any third party. With respect to products specially manufactured to Buyer's specifications, Entegris warrants only that such products have been manufactured, without testing, to Buyer's specifications but makes no other warranty, express or implied. Upon Entegris' confirmation of defects, Entegris agrees, as its **exclusive remedy** to repair or, in its discretion, replace defective product without charge. Entegris is not responsible for product damage resulting from accident, misuse, or lack of reasonable care. **IMPORTANT: No other warranty, written or verbal, is authorized by Entegris. Entegris is not liable for any special, incidental or consequential damages. Implied warranties of merchantability and fitness for a particular purpose are specifically disclaimed.**

Entegris™ is a trademark of Entegris, Inc.
Accuflo™, AutoPod™ and FluoroPure® are trademarks of Fluoroware, Inc.
TEFLON® is a registered trademark of E.I. du Pont de Nemours used under license.

ENTEGRIS, INC.

Corporate Headquarters / 3500 Lyman Boulevard / Chaska, Minnesota 55318 USA
Customer Service Tel. 952-556-4196 In North America 800-394-4084 / Customer Service Fax 952-556-8022
www.entegris.com / www.cfmsolutions.com / www.cynergyonline.com