



## PFA DIP TUBES

*High-purity, chemically inert PFA dip tubes for biopharm sparging, CIP sprays, chemical addition and dispense*

### Overview

As the biotech and pharmaceutical markets continue to grow, managing the contaminants generated by the use of stainless steel components in aggressive chemistries remains a significant challenge. This is especially true in connection systems where extractable metals can cause process, product and media contamination.

Entegris now offers PFA dip tubes, a cost-effective, robust alternative to stainless steel and exotic metal alloy connection systems. This product platform provides low extractables and leachables performance while eliminating costly and time-consuming passivation steps. PFA dip tubes can withstand corrosive chemicals, which reduces maintenance cost and extends product lifetime. In addition to standard design options, Entegris offers a broad range of capabilities to meet specific design requirements including connections styles, line sizes and dip tube lengths.

### Applications

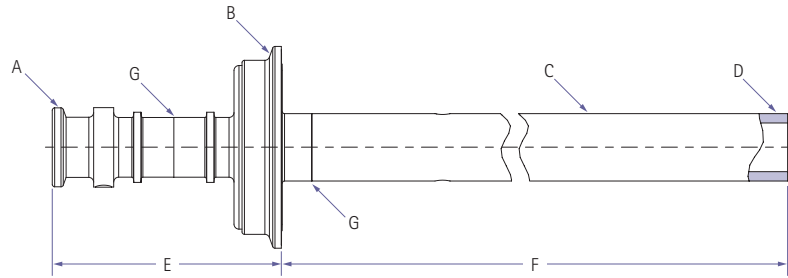
- Compounding, fermentation, cell culture
  - Sparging
  - Chemical addition
  - Chemical sampling and dispense
  - Spray device assemblies



### Features and Benefits

- Inert PFA or PTFE wetted surfaces eliminate chemical corrosion
- PFA material provides high-purity and low extractables
- Standard and custom connections styles, including sanitary clamp and ANSI® flanges, facilitate easy installation on existing equipment
- Industry-proven designs perform well in a wide range of temperatures and chemistries
- Manufactured using FDA and USP VI compliant materials for validated applications
- Materials of construction and fabrication methods facilitate sterilization and easy cleanability

## Design Options



A	Dispense connection:	Style:	Sanitary flange, ANSI flange, flare, threaded, other
		Size:	1/2" to 2" depending on connection style
B	Vessel connection:	Style:	Sanitary flange, ANSI flange, flare, threaded, other
		Size:	1/2" to 8" depending on connection style
C	Nominal dip tube size:		1/2" to 2" tubing, pipe
D	Dip tube termination:		Threaded, square cut, angle cut, capped, other
E	Connection length:		Customer-specified
F	Dip tube length:		Customer-specified
G	Joint type (where applicable):		Cynergy® Weld-in-Place™ beadless weld, PureBond® weld, threaded, other

Standard options shown. Contact Entegris for additional design options.

## For More Information

Please contact your Regional Customer Service Center for a custom dip tube consultation and quote. Visit [www.entegris.com](http://www.entegris.com) and select the Customer Service link for the center nearest you.

## Terms and Conditions of Sale

All purchases are subject to Entegris' Terms and Conditions of Sale. To view and print this information, visit [www.entegris.com](http://www.entegris.com) and select the Legal Notices link from the footer.

Entegris®, Cynergy®, PureBond® and Weld-in-Place™ are trademarks of Entegris, Inc.  
ANSI® is a registered trademark of American National Standards Institute, Inc.

### ENTEGRIS, INC.

Corporate Headquarters | 129 Concord Road | Billerica, MA 01821 USA  
Customer Service Tel. +1 952 556 4181 | Customer Service Fax +1 952 556 8022  
In North America 800 394 4083 | [www.entegris.com](http://www.entegris.com)

©2012 Entegris, Inc. All rights reserved Printed in USA 3410-7170CRE-0312

