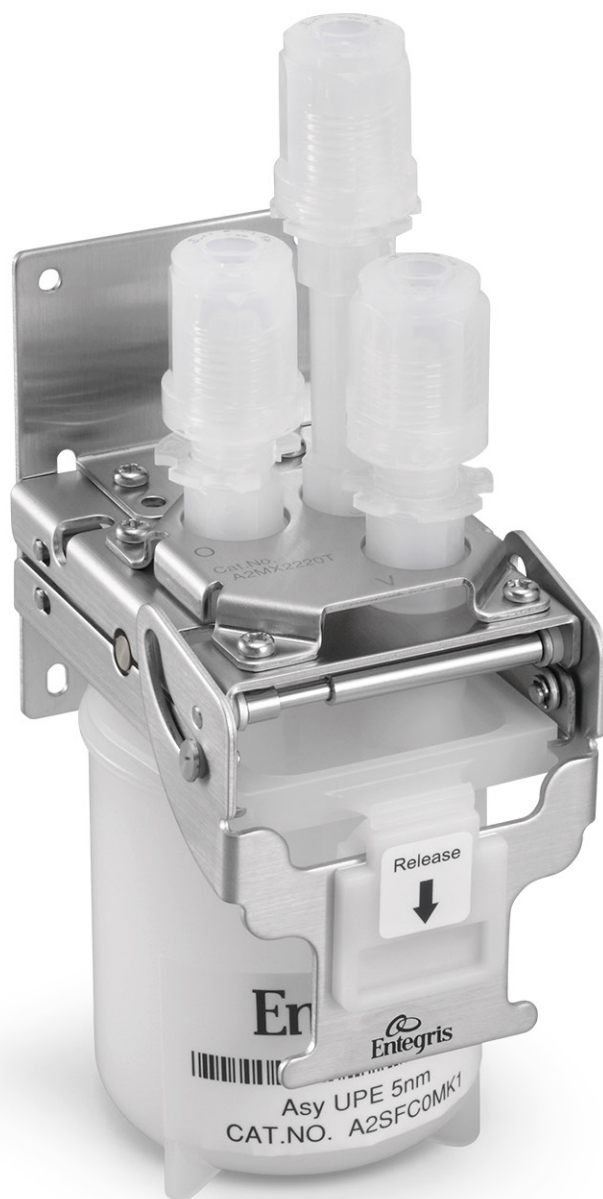



Impact[®] 2 Manifold

Operating manual



 **CAUTION:** To reduce the safety risk of chemical leakage, carefully follow these instructions.

MANIFOLD SPECIFICATIONS

Material	Metal plates	Stainless Steel
	Release tub	Polyacetal
	Connectors	Fluoropolymer
Connection	See below table	
Maximum Operating Pressure	0.39 MPa @ 25°C	

MANIFOLD PART NUMBERS

(Quantity 1 each/box)

CONNECTION	TUBE O.D./I.D.		BACK BRACKET	PART NUMBER
	INLET/OUTLET	VENT		
Super Type Pillar	6.35/3.95 mm	6.35/3.95 mm	Standard	A2MP22201
Super Type Pillar	6.35/4.35 mm	6.35/4.35 mm	Standard	A2MP2220T
Flowell 60	3.2/2.2 mm	4.0/3.0 mm	Option 2	A2MX1140TXW
Flowell 60	6.35/4.35 mm	3.2/2.2 mm	Standard	A2MX2210TX
Flowell 60	6.35/3.95 mm	6.35/3.95 mm	Standard	A2MX22201
Flowell 60	6.35/4.35 mm	6.35/4.35 mm	Standard	A2MX2220T
Flowell 60	6.35/4.35 mm	6.35/4.35 mm	Standard	A2MX2220TS
Flowell 60	6.35/4.35 mm	4.0/3.0 mm	Standard	A2MX2240T
Flowell 60	6.35/4.35 mm	4.0/3.0 mm	Standard	A2MX2240TS
Flowell 60	4.0/3.0 mm	4.0/3.0 mm	Option 1	A2MX4440TW
Flowell 60	4.0/3.0 mm	4.0/3.0 mm	Standard	A2MX4440TX

CONNECTION	TUBE O.D./I.D.		BACK BRACKET	PART NUMBER
	INLET/OUTLET	VENT		
Flowell 80	3.2/2.2 mm	4.0/3.0 mm	Option 2	A2MZ1140TW
Flowell 80	6.35/4.35 mm	6.35/4.35 mm	Standard	A2MZ2220T
Flowell 80	6.35/4.35 mm	4.0/3.0 mm	Standard	A2MZ2240T
Flowell 80	4.0/3.0 mm	4.0/3.0 mm	Option 1	A2MZ4440TW

RELATED PRODUCTS

FILTERS

(Quantity 1 each/box)

(Accessories: disposal cap plug)

Product name	Part number
Impact 8G Filter	—

FLUSHING SHELL

(Dummy filter for line flushing)

(Quantity 1 each/box)

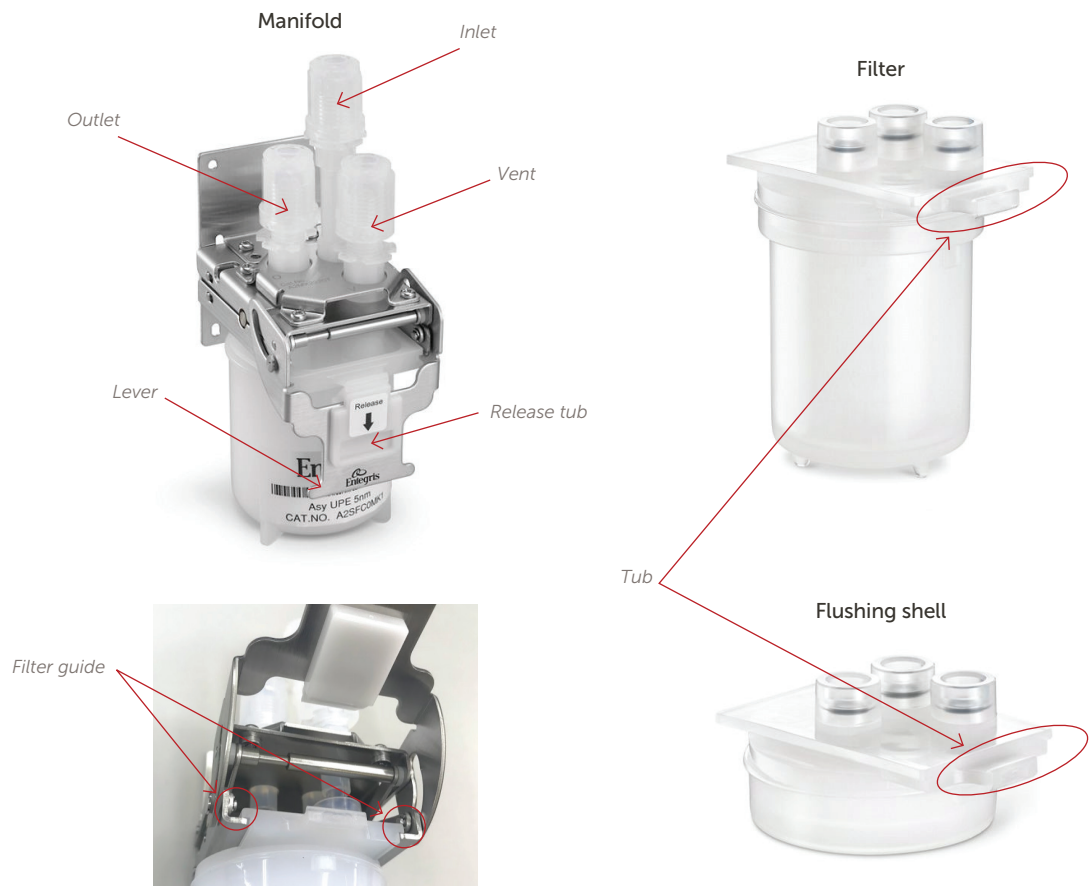
Product name	Part number	Material/hold-up volume
Impact 8G Flushing Shell	A2AMC00K1	PE/1 ml

CAUTION: Eximor® SV manifold compatible filters and flushing shells are only those listed in the tables above. Impact filter and other filter products cannot be installed.

CAUTION: The flushing shell is designed for short-term use (less than 1 month) in flushing chemical lines and systems.

- Replace flushing shell with appropriate filter once line flushing is completed.
- Discard used flushing shells. Do not reuse.
- Do not use flushing shells in lieu of a filtration device or subject to long-term exposure to solvents in a pressurized environment.
- The warranty will be voided if the product is used in lieu of a filtration device or is subjected to long-term exposure to solvents in a pressurized environment.
- If expecting extended idle time in dispense line, we strongly urge customers to perform one of the following to avoid compromising flushing shell integrity:
 - Depressurize line while flushing shell is installed.
 - Dry the line and discontinue using the flushing shell.

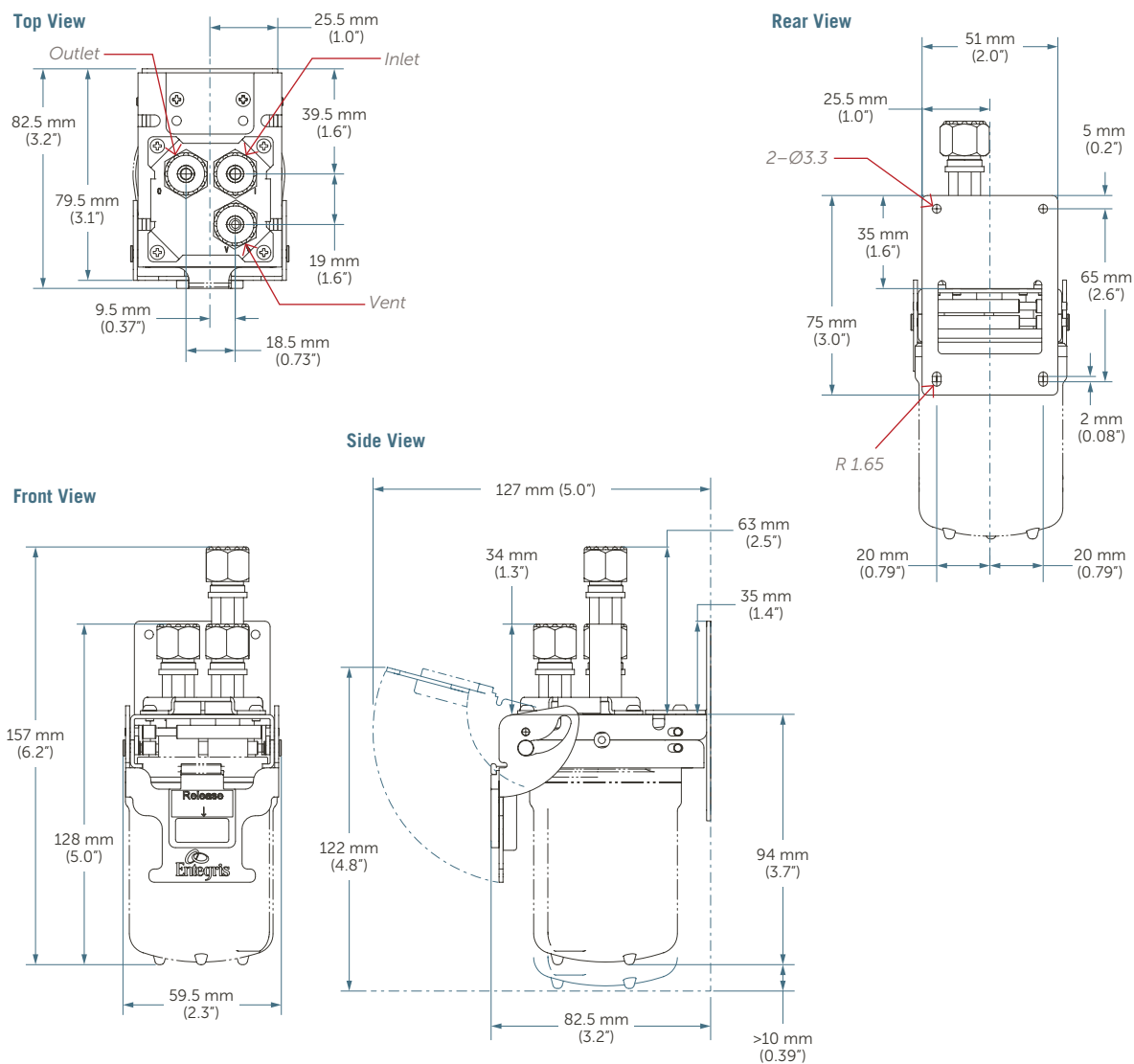
IDENTIFYING PARTS



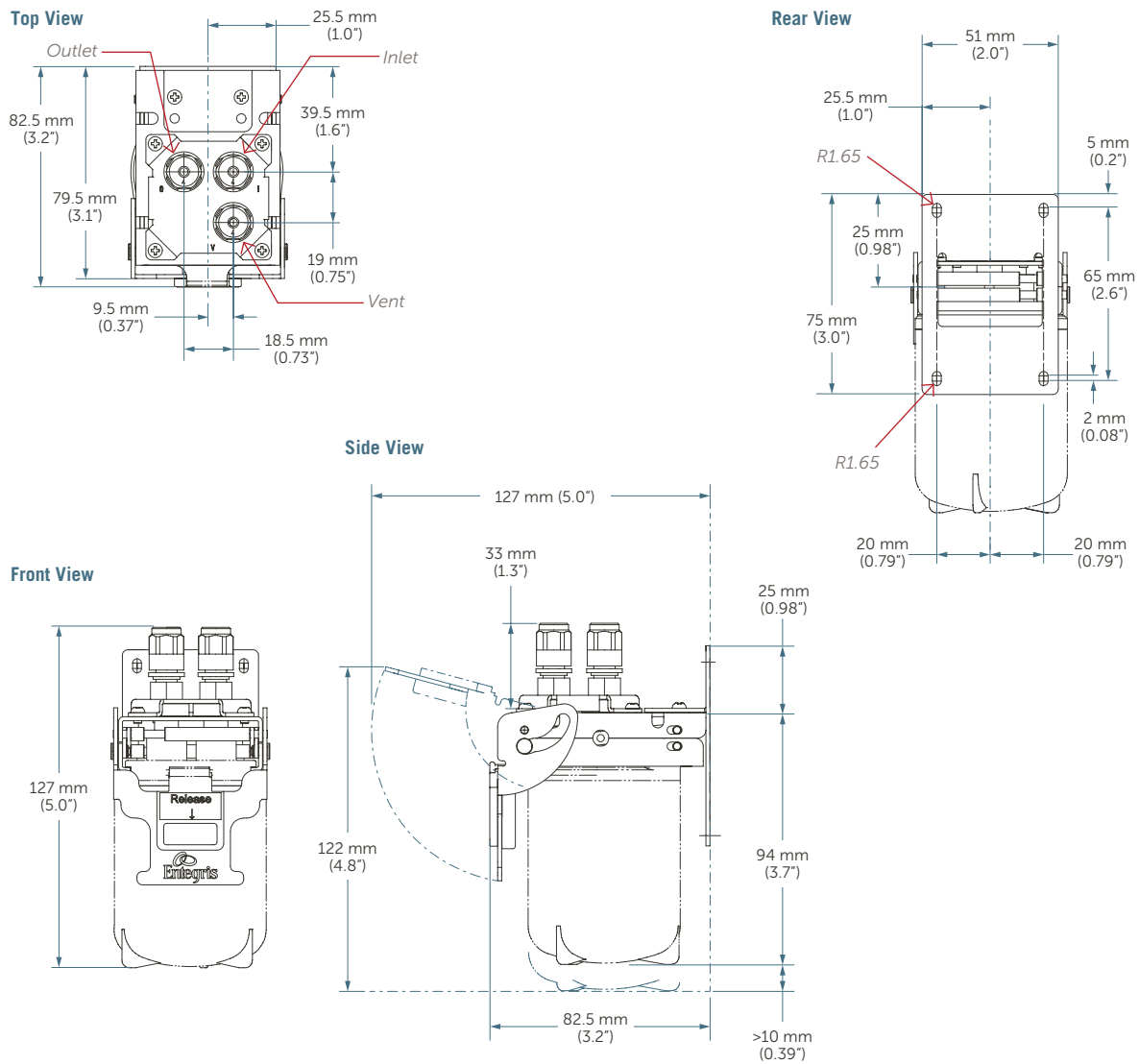
DIMENSIONS

(Representative part number only)

A2MP2220T (STANDARD BACK BRACKET)

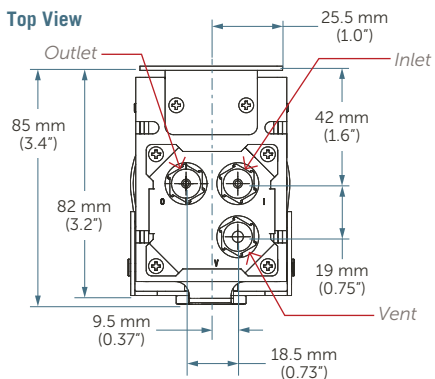


A2MX4440TW (BACK BRACKET: OPTION 1)

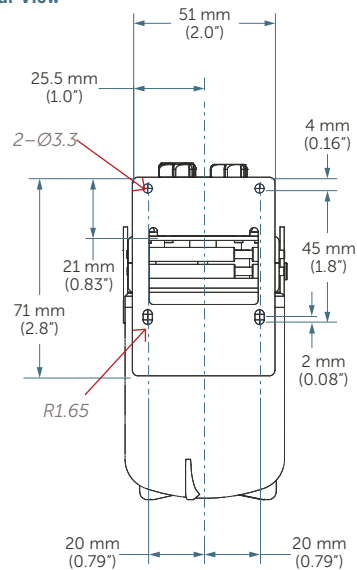


A2MZ1140TW (BACK BRACKET: OPTION 2)

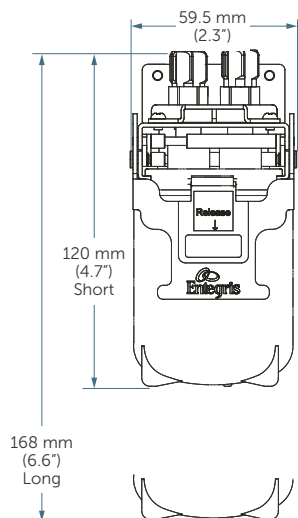
Top View



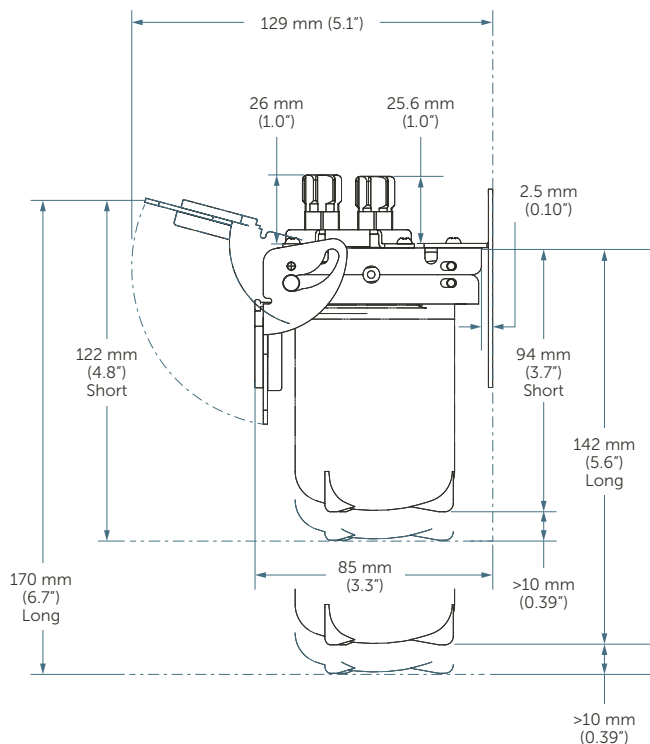
Rear View



Front View



Side View



For more information about dimensions not listed here, please see the datasheet on our website, or contact Entegris.

SAFETY INSTRUCTIONS



WARNING:

- Follow all safety and ventilation regulations and follow all gas and liquid handling procedures. Wear clothing and safety equipment appropriate for the gas and liquid used. Wear chemical-resistant work clothes and safety glasses while changing and setting up the filter.
- If you do not follow the precautions, the product may not perform properly or may not be covered by the product warranty.
- Do not disassemble the manifold product.
- Do not crush and do not expose the manifold to any shock or force such as hammering, dropping or stepping on it.

INSTALLING THE IMPACT 2 MANIFOLD



CAUTION:

- Before unpacking the product, make sure the product matches the model you ordered.
- Once opened, products may not be returned in some cases.

1. Determine the mounting position of the manifold and prepare the required mounting holes or conversion bracket.



CAUTION: Refer to the dimensions on pages 2 to 4 and secure the space required for replacing the filter and installing the fitting.

2. Place the manifold on a vertical surface of sufficient strength so that the top of the manifold is horizontal. Use a level if necessary, to check the level of the manifold.



CAUTION: If the installation surface of the manifold is not horizontal or the strength is insufficient, the liquid may splatter when replacing the filter. Reinforce the installation surface as necessary.

It is recommended to install a stop valve on the vent and outlet lines with the shortest possible pipe length to minimize dripping when replacing the filter.

If it is difficult to connect the tubes after installing the manifold, it is possible to connect the tubes before installing the manifold.



CAUTION: Make sure that no load is applied to the connector due to the weight or layout of the piping. Sufficient sealing performance may not be exhibited, and chemical liquid leakage may occur.

REMOVING/ATTACHING FILTER

1. Preparing the line before replacing the filter:

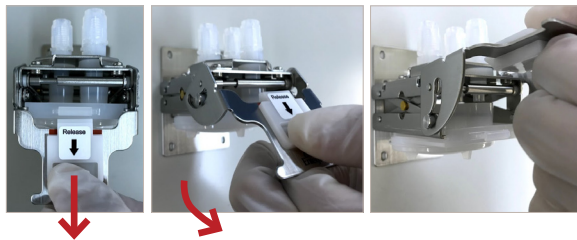
- a) Before replacing the filter, stop the flow of liquid on the upstream side with the downstream side of the filter open, so that the pressure inside the filter is not applied.
- b) It is recommended purging the chemical in the piping with a safe fluid.

2. Preparing the filter to be replaced:

- a) Filters compatible with this product are double wrapped for use in cleanrooms.
- b) Please handle the product according to the cleanroom procedure.

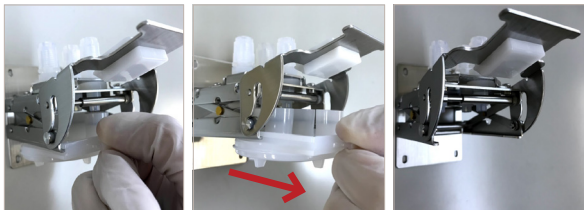
REMOVING THE FILTER

1. Raise the lever while lowering the release tab with your thumb.



CAUTION: If the lever is not raised enough, the filter may not pull out smoothly. Lift the lever completely until it stops, as it may cause damage to the manifold or filter.

2. Grasp the filter or flushing shell tub and slowly pull out the used filter or flushing shell from the filter guide.

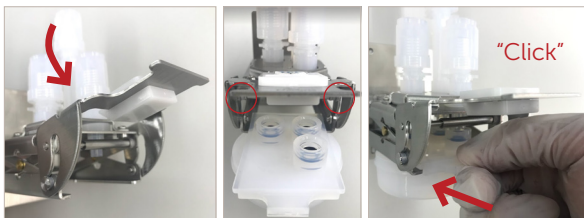


CAUTION: Make sure that the O-rings and stop rings of the filter or flushing shell are not left at the manifold connection.

If the O-ring or stop ring remains on the manifold side, remove it before installing a new filter or flushing shell. There is a risk that the liquid leakage due to improper installation.

ATTACHING THE FILTER

1. Raise the manifold lever to the top.
2. Place the filter or flushing shell in the groove of the filter guide and push it in along the guide until you hear the click sound. (Though there may be some resistance before reaching to the end, push the filter or flushing shell to the end.)



CAUTION: If the lever is not raised enough, the filter or flushing shell cannot be inserted along the filter guide.

Remove the filter or flushing shell once, lift the lever to the top, and then try installing again.

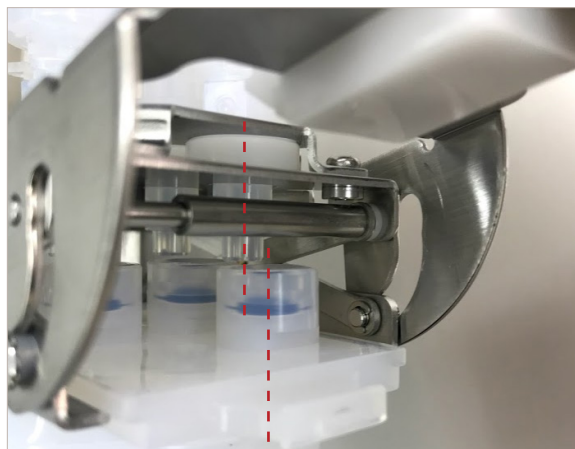
If the filter or flushing shell is forcibly inserted while the lever is not raised enough, the manifold or filter may be damaged, or the chemical solution may leak.

CAUTION: Do not lower the lever with the filter or flushing shell not fully inserted.

The connector on the manifold side may come into contact with the outer wall of the connection part of the filter or flushing shell and may be damaged.

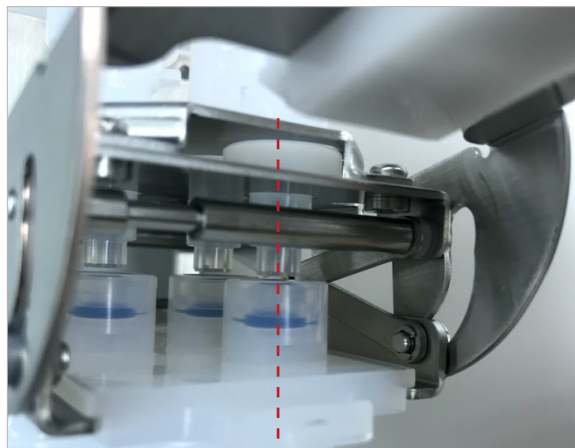
Incomplete Insertion of Filter/Flushing Shell

The manifold connection is not centered on the filter connection.

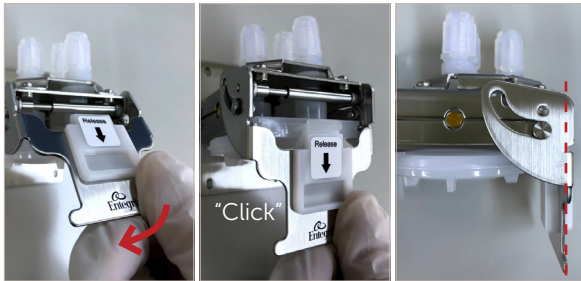


Complete Insertion of Filter/Flushing Shell

The manifold connection is centered on the filter connection.



3. Lower the lever until you hear a click from the release tab.
4. If the lever does not go down until it is vertical, the filter or flushing shell may not be locked properly. Please try again from the removal procedure on page 8.



CAUTION: Do not lower the lever with the filter or flushing shell not fully inserted. Make sure all the fittings and tubing are securely fastened before starting liquid flow

LIMITED WARRANTY

Entegris' products are subject to the Entegris, Inc. General Limited Warranty. To view and print this information, visit entegris.com and select the [Legal & Trademark Notices](#) link in the footer. Entegris does not warrant any failure in the case of customers using unapproved foreign components.

FOR MORE INFORMATION

Please call your Regional Customer Service Center today to learn what Entegris can do for you. Visit entegris.com and select the [Contact Us](#) link to find the customer service center nearest you.

TERMS AND CONDITIONS OF SALE

All purchases are subject to Entegris' Terms and Conditions of Sale. To view and print this information, visit entegris.com and select the [Terms & Conditions](#) link in the footer.



Corporate Headquarters

129 Concord Road
Billerica, MA 01821
USA

Customer Service

Tel +1 952 556 4181
Fax +1 952 556 8022
Toll Free 800 394 4083

Entegris®, the Entegris Rings Design®, and other product names are trademarks of Entegris, Inc. as listed on entegris.com/trademarks. All third-party product names, logos, and company names are trademarks or registered trademarks of their respective owners. Use of them does not imply any affiliation, sponsorship, or endorsement by the trademark owner.

©2025 Entegris, Inc. | All rights reserved. | Printed in the USA | 4449-14096 ENT-0225