

Impact[®] 8G Flushing Shell

Transitional flow-through device that enables a more efficient flow path and enhanced cleanliness

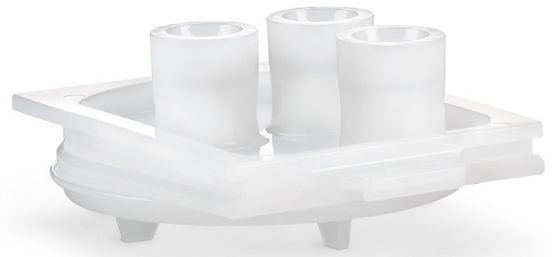
Building on the industry-proven design of our Impact[®] 2 flushing shell, the Impact 8G flushing shell offers a cleaner, more efficient transitional flow-through solution for point-of-use (POU) photochemical filtration and dispense. Compatible with both Impact 2 and Impact 8G filter families, this compact flow-through device occupies a smaller form factor, and delivers enhanced device cleanliness between filter change-outs or before filter installations. Intended for short-term use flushing tools and fluid lines, the design enhancements reduce chemical waste and hold-up volume, ensuring overall mechanical stability.

APPLICATIONS

- Industry: Semiconductor
- Process: Photolithography
- Chemistry: Photoresist, Photochemicals, Solvents
- Installation Point: Point of Tool

FEATURES & BENEFITS

Cleaner, more efficient flow path	Minimizes hold up volume enabling quick flush up and reduces chemical dispense
Advanced cleanliness specification	Ensures overall device cleanliness and better quality control
	Enhances organic, metal, and particle shedding performance and minimizes sources of contamination
Reduced hold-up volume	Higher rated burst pressure improves mechanical device integrity
Extended cycle lifetime	Enables greater durability



Compatible with both Impact 2 and Impact 8G filters.

SPECIFICATIONS

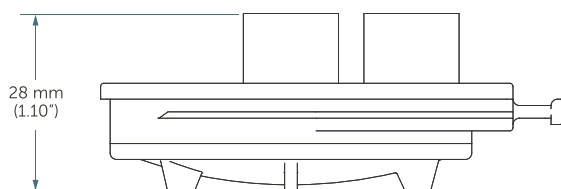
Hold-up volume	1 mL
Material	HDPE
Internal surface area	1.4 cm ² (0.22 in ²)
Operating conditions	Maximum inlet pressure: 0.34 MPa (3.4 bar, 50 psi) @ 25°C (77°F) Maximum temperature: 40°C (104°F)

Note: The flushing shell is designed for short-term use (less than 1 month) in flushing chemical lines and systems.

- Replace flushing shell with appropriate filter once line flushing is completed.
- Discard used flushing shells. Do not reuse.
- Do not use flushing shells in lieu of a filtration device or subject to long-term exposure to solvents in a pressurized environment.
- The warranty will be voided if the product is used in lieu of a filtration device or is subjected to long-term exposure to solvents in a pressurized environment.
- If expecting extended idle time in dispense line, we strongly urge customers to perform one of the following to avoid compromising flushing shell integrity:
 - Depressurize line while flushing shell is installed.
 - Dry the line and discontinue using the flushing shell.

DIMENSIONS

Impact 8G Flushing Shell



ORDERING INFORMATION

PART NUMBER	HOLD UP VOLUME	O-RING
A2AMC00K1	1 mL	OF (On Filter) with Kalrez®

FOR MORE INFORMATION

Please call your Regional Customer Service Center today to learn what Entegris can do for you. Visit entegris.com and select the [Contact Us](#) link to find the customer service center nearest you.

TERMS AND CONDITIONS OF SALE

All purchases are subject to Entegris' Terms and Conditions of Sale. To view and print this information, visit entegris.com and select the [Terms & Conditions](#) link in the footer.



Corporate Headquarters
129 Concord
Billerica, MA 01821
USA

Customer Service
Tel +1 952 556 4181
Fax +1 952 556 8022
Toll Free 800 394 4083

Entegris®, the Entegris Rings Design®, and other product names are trademarks of Entegris, Inc. as listed on entegris.com/trademarks. All third-party product names, logos, and company names are trademarks or registered trademarks of their respective owners. Use of them does not imply any affiliation, sponsorship, or endorsement by the trademark owner.

©2009-2022 Entegris, Inc. | All rights reserved. | Printed in the USA | 4449-7822DSA-0822