

# NOWPak<sup>®</sup> System Replacement Polyethylene Barrier Liner

*Pre-cleaned, two-ply, polyethylene  
barrier N700 liner*

The N700 replacement liner is designed for use with the NOWPak<sup>®</sup> liner-based canister system. The liner provides ultraclean chemical dispensing without direct contact between the chemical and drive gas. Replacement liners are available in 4, 10, 18, 19, 40, and 200 liter sizes.

## APPLICATIONS

- NOWPak systems are designed for applications that require containment and safe transport of liquids that have high-purity requirements and/or are sensitive to the environment.



*Polyethylene barrier N700 replacement liner*

## FEATURES & BENEFITS

- Liners are particle tested and certified to maintain purity requirements of customers' chemicals
- Liner-based system minimizes risk of microbubbles
- Collapsible liner system helps maximize chemical utilization
- Liners are pre-folded to ensure easy insertion into the canister
- Liners are easily removed for disposal, resulting in minimal waste

## SPECIFICATIONS

<b>Materials of construction</b>	Film	PE with barrier film, translucent color
	Fitment	Injection molded HDPE
	Fitment adapter (200-liter liners)	Injection molded HDPE
	Fitment adapter O-ring (200-liter liners)	Option F* – EPDM Option K* – Semi-perfluorinated
	Retainer	Injection molded HDPE
	Temporary cap	Injection molded, red pigmented LDPE
	Liner sleeve	PE
<b>Manufacturing standards</b>	Fabricated and tested in a Class 5 Cleanroom as per International Standard ISO 14644-1:** Cleanrooms and associated controlled environments – Part 1: Classification of air cleanliness.	
	Film and heat-seal defect detection	Light table visual inspection: Inspection frequency 100%.
	Liner leak detection	Pressure decay tested: Test frequency 100%. Pass/fail test.
	Weld integrity verification	Pressurized burst tested: Test frequency 1:100. Tensile weld (film/film) strength tested: Test frequency 1:100. Fitment weld (fitment/film) strength tested: Test frequency 1:100. Fitment push through tested: Pass/fail test. Test frequency 1:100.
Particle count verification	Particle testing with ultrapure DI water: Test frequency 1:50.	
<b>Cleanliness</b>	Product is not to exceed 10 counts/mL at $\geq 300$ nm in ultrapure DI water. A Certificate of Analysis stating batch-specific particle count data is available for each shipment of product.	

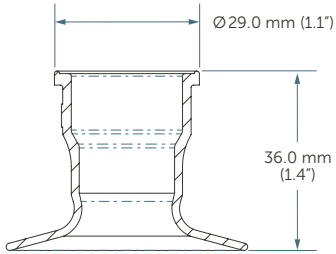
\* See Unique Features table on page 5.

\*\* ISO standard certification is kept up to date as necessary to remain current and effective to be able to demonstrate compliance with up-to-date ISO requirements.

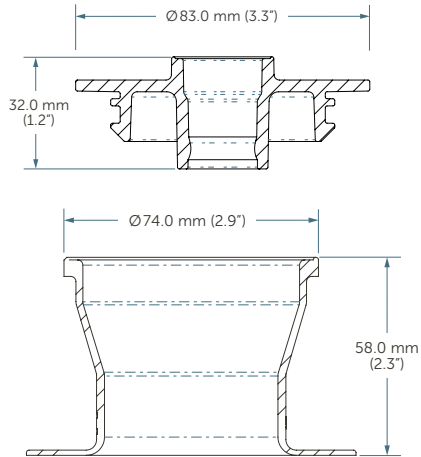
## DIMENSIONS

### Fitment

#### ¾ Fitment (Hardstop)

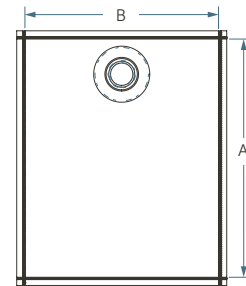


#### 2" Fitment and Adapter (Hardstop)



PART NUMBER		LINER DIMENSIONS		
Liner	Canister*	Size	A	B
NL-004-N700C-1	NO-04 NO-04-63*	4 L	406 mm (16.0")	298 mm (11.8")
NL-010-N700C-1	NO-05 NO-05-63*	10 L	508 mm (20.0")	375 mm (14.8")
NL-018-N700C-1	NO-09 NO-09-63*	18 L	724 mm (28.5")	381 mm (15.0")
NL-019-N700C-1	NO-07* NO-08 NO-08-63* NO-08A-63*	19 L	679 mm (26.8")	489 mm (19.3")
NL-040-N700D-1	NO-40 NO-40-63* NO-40A NO-40A-63*	40 L	927 mm (36.5")	572 mm (22.5")
NL-200-N700F-1	NO-200	200 L	1391 mm (54.8")	991 mm (39.0")
NL-200-N700K-1	NO-200-2** NO-200A NO-200A-2**			

### Liner



#### Notes:

1. Unless otherwise indicated, all numeric values are nominal
2. All dimensions are measured inside to inside of weld
3. A and B dimensions are  $\pm 6$  mm (0.25")
4. 200 liter liner is double top welded

\*Canisters with modified buttress 63 mm neck thread

\*\*Canisters with corrosion-resistant PTFE coating

## SHIPPING INFORMATION

**Labeling** Each liner is labeled with the batch number and part number. Each carton box and cleanroom bag is labeled with the part number, batch number(s), and quantity of liners.

**Packaging** Each liner is capped, folded, and inserted into a cleanroom sleeve (heat sealed), then bulk packaged in a corrugated carton, lined with a PE cleanroom bag. Retainers are packaged in cleanroom conditions and shipped in the same quantity as the liner.

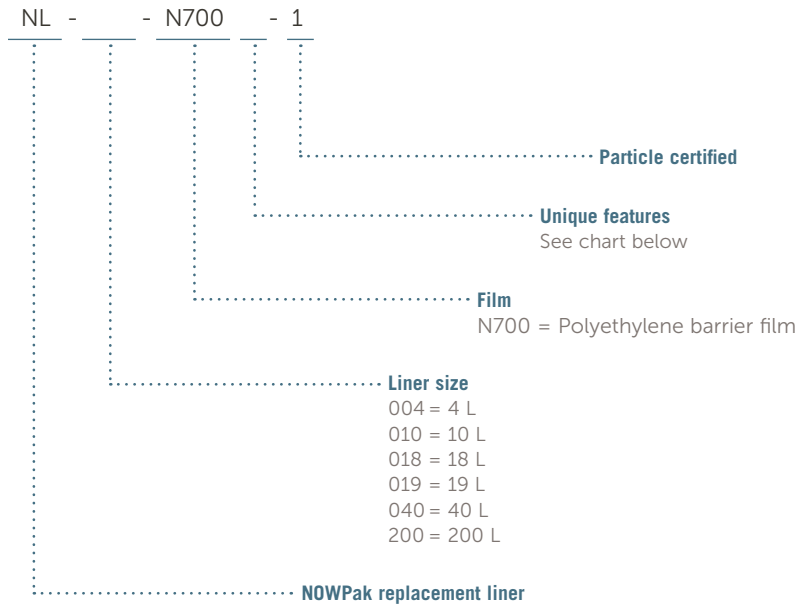
4 to 40 liter size: packaged 50 per carton.  
200 liter size: packaged 15 per carton.

Part number	Size	Box quantity (minimum order quantity)	Skid quantity (economic order quantity)	Box dimensions (L x W x H)
NL-004-N700C-1	4 L	50	900 (18 boxes of 50)	550 mm x 430 mm x 415 mm 21.7" x 16.9" x 16.3"
NL-010-N700C-1	10 L	50	900 (18 boxes of 50)	550 mm x 430 mm x 415 mm 21.7" x 16.9" x 16.3"
NL-018-N700C-1	18 L	50	900 (18 boxes of 50)	550 mm x 430 mm x 415 mm 21.7" x 16.9" x 16.3"
NL-019-N700C-1	19 L	50	900 (18 boxes of 50)	550 mm x 430 mm x 415 mm 21.7" x 16.9" x 16.3"
NL-040-N700D-1	40 L	50	600 (12 boxes of 50)	540 mm x 540 mm x 480 mm 21.3" x 21.3" x 18.9"
NL-200-N700F-1 NL-200-N700K-1	200 L	15	120 (8 boxes of 15)	890 mm x 710 mm x 305 mm 35.0" x 28.0" x 12.0"

Note: Unless otherwise indicated, all numeric values are nominal.

## ORDERING INFORMATION

NOWPak Liner-based Canister System Replacement Liner: part number



### Unique features

Unique feature code	Description	Available on liner sizes
C	¾" fitment (hardstop)	4, 10, 18, and 19 liter
D	Alternate liner design with ¾" fitment (hardstop)	40 liter
F	2" fitment with fitment adapter (hardstop) and EPDM o-ring	200 liter
K	2" fitment with fitment adapter (hardstop) and semi-perfluorinated o-ring, double Z fold	200 liter

## ACCESSORIES

Part number	Description
NA-60	Liner insertion tool for 4 to 40 liter liners
NA-60-200	Liner insertion tool for 200 liter liners
NA-06	Liner removal tool for 4 to 40 liter liners
NA-17	Liner removal and drain tool for 4 to 40 liter liners
DA-04	Liner removal tool for 200 liter liners
NA-13	Diptube removal tool for 4 to 200 liter liners
NA-07-100	Liner disposal plug, bag of 100
NF-01-FR	Automatic bag inflation fixture for 4 to 20 liter liners
NA-132	Alternative locator plate for the NF-01-FR bag inflation fixture (Required if using the NO-08A-63 canister with the NF-01-FR bag inflation fixture.)
NF-40-FR	Automatic bag inflation fixture for 40 liter liners
NF-180/200-FR	Automatic bag inflation fixture for 200 liter liners
NA-41	Manual bag inflation connector for 4 to 20 liter liners, 63 mm buttress thread
NA-41-8990	Manual bag inflation connector for 4 to 20 liter liners, 2.5-12 UN thread
NA-41-200	Manual bag inflation connector for 200 liter liners
NA-41-200-2	Manual bag inflation connector for 200 liter liners with 2" fitment

### FOR MORE INFORMATION

Please call your Regional Customer Service Center today to learn what Entegris can do for you. Visit [entegris.com](https://www.entegris.com) and select the [Contact Us](#) link to find the customer service center nearest you.

### TERMS AND CONDITIONS OF SALE

All purchases are subject to Entegris' Terms and Conditions of Sale. To view and print this information, visit [entegris.com](https://www.entegris.com) and select the [Terms & Conditions](#) link in the footer.



#### Corporate Headquarters

129 Concord Road  
Billerica, MA 01821  
USA

#### Customer Service

Tel +1 952 556 4181  
Fax +1 952 556 8022  
Toll Free 800 394 4083

Entegris®, the Entegris Rings Design®, and other product names are trademarks of Entegris, Inc. as listed on [entegris.com/trademarks](https://www.entegris.com/trademarks). All third-party product names, logos, and company names are trademarks or registered trademarks of their respective owners. Use of them does not imply any affiliation, sponsorship, or endorsement by the trademark owner.

©2024 Entegris, Inc. | All rights reserved. | Printed in the USA | 7124-13414ENT-0124