

Sentry® QCII O-ring Changeout and O-ring Removal Tool Blade Replacement

*Instructions for all
Sentry QCII drum inserts*

O-RING REMOVAL PROCEDURE

NOTE: It is easiest to remove the o-rings if the drum insert is assembled in the drum; however, although unlikely, it is possible for particulates from the cut o-ring to fall into the container. An alternative method is to remove the drum insert from the drum, flush it with DI water to ensure neutralization, assemble the drum insert into a fixture and then remove the o-rings using the following procedure.

1. Remove shipping plug from drum insert.
2. Grasp the o-ring removal tool with two hands and push directly down into the drum insert cavity (see Figure 1). Make sure the o-ring removal tool is fully engaged in the drum insert. It is fully engaged when it reaches a stop.

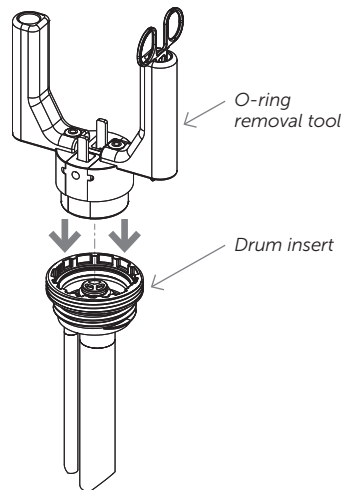


Figure 1.

3. Push each metal tab individually toward center of o-ring removal tool until it stops (see Figure 2). Release each tab.
4. Remove o-ring removal tool from the drum insert.
5. Remove the cut dispense and vent o-rings (two smallest o-rings) using the hemostat provided (see Figure 2).
6. Once the dispense and vent o-rings are removed, use the hemostat to remove the uncut nitrogen o-ring (largest o-ring).

O-RING INSTALLATION PROCEDURE

Vent Port O-ring

Install the vent port o-ring first to prevent damage to the other sealing surfaces as the remaining o-rings are installed (see Figure 3).

1. Before installing, place the o-ring in hot (74°–93°C [150°–200°F]) DI water. Heating the o-ring gives it more elasticity, preventing it from damage during installation.
2. Place one side of the heated o-ring into the o-ring groove. Push the o-ring down into the groove by moving your thumbs in opposite directions. Continue pushing until the entire o-ring snaps into the groove.

Dispense Port O-ring

1. Repeat installation steps 1 and 2 above, this time for dispense port o-ring.

Nitrogen Port O-ring

Unlike the vent port and dispense port o-rings, the nitrogen port o-ring does not have to be heated before installation (see Figure 3).

1. Place one side of the o-ring into the o-ring groove. Push the o-ring into the groove by moving your thumbs in opposite directions. Continue pushing until the entire o-ring snaps into the groove.

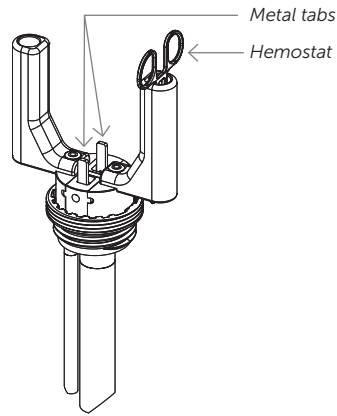


Figure 2.

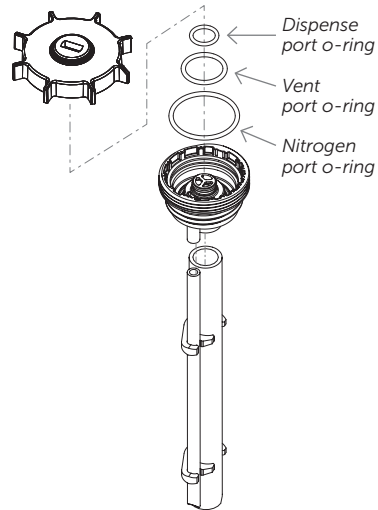


Figure 3.

NOTE: Visually inspect each of the o-rings to ensure it is positioned completely in the groove before inserting the shipping plug or dispense head.

O-RING REMOVAL TOOL BLADE REPLACEMENT INSTRUCTIONS

Blade Replacement

1. Open the kit and examine the replacement blades. Notice that one end of the blade is rounded. This rounded end cuts the o-ring.
2. Turn over the o-ring removal tool and locate the two cutting blades that are to be replaced (see Figure 4).

3. Using a small needle nose pliers or similar, grasp each blade and pull it straight out (see Figure 5). Safely discard the old blades.

⚠ CAUTION! New blades are very sharp. Do not press on the edge when inserting.

4. Insert a new blade in each position. Make sure the sharp edge of the blade is toward the inside. If needed, use a metal punch to press on the pin-shaped side of the blade until it is fully seated (see Figure 6).

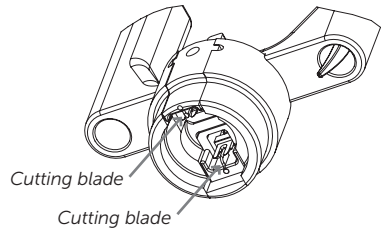


Figure 4.

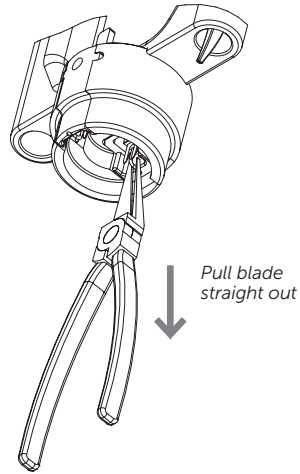


Figure 5.

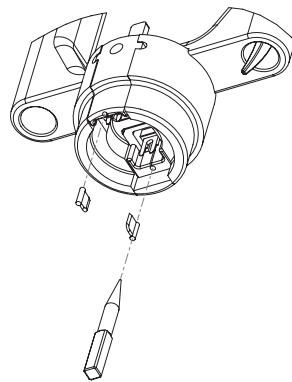


Figure 6.

FOR MORE INFORMATION

Please call your Regional Customer Service Center today to learn what Entegris can do for you. Visit entegris.com and select the Contact Us link to find the customer service center nearest you.

TERMS AND CONDITIONS OF SALE

All purchases are subject to Entegris' Terms and Conditions of Sale. To view and print this information, visit entegris.com and select the Terms & Conditions link in the footer.



PURE ADVANTAGE

Corporate Headquarters

129 Concord Road
Billerica, MA 01821
USA

Customer Service

Tel +1 952 556 4181
Fax +1 952 556 8022
Toll Free 800 394 4083

Entegris®, the Entegris Rings Design™, Pure Advantage™ and Sentry® are trademarks of Entegris, Inc.
©2001-2017 Entegris, Inc. | All rights reserved. | Printed in the USA | 3560-0685ENT-0717