

GLASSMATE® GF Materials

Premium graphite for glass forming applications

With the variety of materials available in today's market, using a graphite material developed for a specific application ensures optimum performance, increased throughput, and improved cost of ownership. Entegris' Poco Graphite facility produces a line of materials specifically intended for Glass Forming applications. POCO's GLASSMATE® materials are produced using a proprietary process which allows differentiation over conventional graphite materials. This process differentiation leads to:

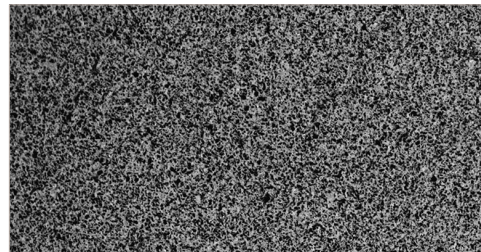
- World class microstructure
- Higher level of interconnected porosity
- Tighter correlation between particle and pore
- Improved purity levels
- Isotropic mechanical properties
- Increased machining capabilities
- Higher physical strength
- Unique coefficient of thermal expansion (CTE)

ATTRIBUTES

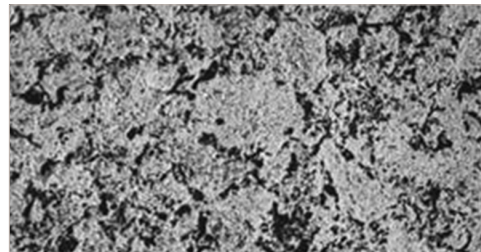
- Improved surface finish on glass
- Non-wetting to glass
- Reduced glass stress and less thermal checking
- Increased mold life
- Uniform oxidation resistance
- Improved machinability
- Improved wear/erosion resistance
- Higher product yield rates
- Minimal production downtime
- CTE match to popular high CTE glass
- Process consistency for improved cost of ownership



3D formed glass for smartphones



GF microstructure



Conventional graphite microstructure

QUALITY

POCO's quality program assures that each person has the opportunity to perform a quality job in a safe environment. Quality is built into each POCO product as it progresses through the plant. POCO is an ISO:9008 and AS:9100 registered company.

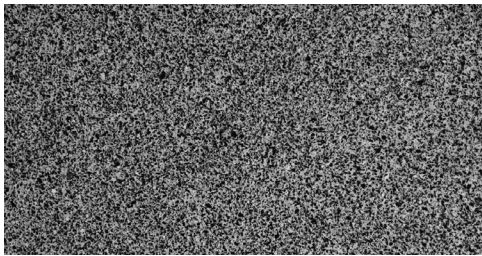
GLASSMATE GRADES

GF

This is the base grade of POCO's GLASSMATE Glass Forming materials with high strength and durability for glass forming applications. GF materials provide higher product yield through improved glass surface finishes and a match to high CTE glass products.

GF-LT

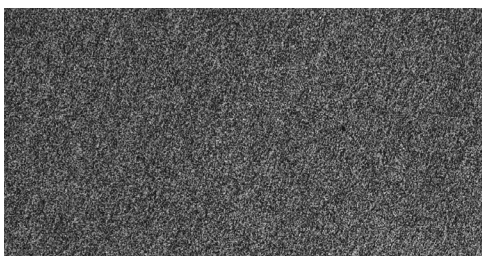
This material offers the same attributes as GF in addition to improved wear and erosion resistance. The higher hardness of this material provides superior polishing capabilities to a very high gloss surface finish.



GF and GF-LT microstructure

GF-XL

POCO's GF-XL material offers a tighter microstructure and higher hardness over GF to improve wear resistance and provide improved glass surface quality. The smaller particle size of GF-XL allows for increased material strength and reduced porosity.



GF-XL microstructure

POST-PROCESSING

POCO offers purification of each GM-GF material to allow for increased oxidation resistance through the elimination of metallic contaminants that react to oxygen present in the glass forming process.

POCO's purification process reduces impurities to 5 ppm (99.9995%) or less as determined by ash analysis.

Targeted Purified POCO Graphite GDMS Elemental Data Analysis

ELEMENT	CONCENTRATION
Na	<0.005 ppm*
Mg	<0.005 ppm*
Al	0.09 ppm
K	<0.005 ppm*
Ca	<0.005 ppm*
Ti	0.02 ppm
V	0.002 ppm
Mn	<0.001 ppm*
Fe	0.03 ppm
Ni	0.01 ppm
Cu	<0.001 ppm*
Zn	<0.005 ppm*
Si	Trace to 5 ppm
S	Trace to 5 ppm
B	Trace to 5 ppm
P	Trace
Mo	Trace

* Denotes value below detection limits

COST OF OWNERSHIP

The use of POCO GF materials provides a positive cost of ownership when taking the following into consideration:

- Enhanced machinability
- Excellent mold finish minimizing cost for hand polishing
- Extended mold life
- Minimal downtime for mold set change
- Increased product yield per run
- Reduced glass polishing requirements
- Superior product quality
- Improved ability to meet consumer product demand

TYPICAL MATERIAL PROPERTIES

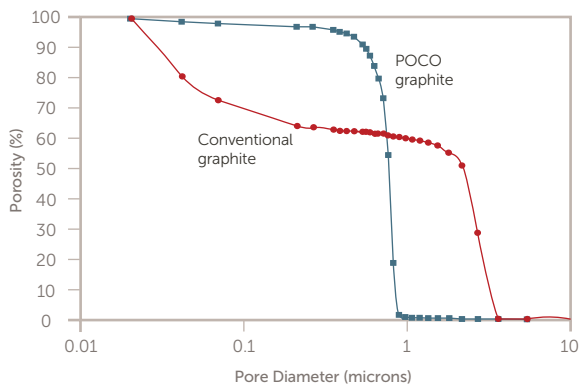
PROPERTY	GF	GF-1	GF-LT	GF-LT-1	GF-XL	GF-XL-1
Particle size	<3 μm (120 μin)	<3 μm (120 μin)	<3 μm (120 μin)	<3 μm (120 μin)	<1 μm (40 μin)	<1 μm (40 μin)
Pore size	0.8 μm (32 μin)	0.8 μm (32 μin)	0.8 μm (32 μin)	0.8 μm (32 μin)	0.2 μm (8 μin)	0.2 μm (8 μin)
Apparent density	1.74 g/cm ³ (0.063 lb/in ³)	1.74 g/cm ³ (0.063 lb/in ³)	1.77 g/cm ³ (0.064 lb/in ³)	1.77 g/cm ³ (0.064 lb/in ³)	1.74 g/cm ³ (0.063 lb/in ³)	1.74 g/cm ³ (0.063 lb/in ³)
Compressive strength	130 MPa (18,800 psi)	130 MPa (18,800 psi)	155 MPa (22,500 psi)	155 MPa (22,500 psi)	162 MPa (23,500 psi)	162 MPa (23,500 psi)
Flexural strength¹	92 MPa (13,350 psi)	92 MPa (13,350 psi)	97 MPa (14,100 psi)	97 MPa (14,100 psi)	95 MPa (13,800 psi)	95 MPa (13,800 psi)
Shore hardness	74	74	96	96	88	88
Coefficient of thermal expansion	8.1 μm/m °C (4.5 μm/in °F)	8.1 μm/m °C (4.5 μm/in °F)	8.5 μm/m °C (4.7 μm/in °F)	8.5 μm/m °C (4.7 μm/in °F)	8.1 μm/m °C (4.5 μm/in °F)	8.1 μm/m °C (4.5 μm/in °F)
Thermal conductivity²	85 W/m-K (50 BTU-ft/hr/ft ² °F)	85 W/m-K (50 BTU-ft/hr/ft ² °F)	60 W/m-K (35 BTU-ft/hr/ft ² °F)	60 W/m-K (35 BTU-ft/hr/ft ² °F)	77 W/m-K (45 BTU-ft/hr/ft ² °F)	77 W/m-K (45 BTU-ft/hr/ft ² °F)
Purity (ash)	<3000 ppm	<5 ppm	<3000 ppm	<5 ppm	<3000 ppm	<5 ppm
Oxidation threshold³	450°C (842°F)	560°C (1040°F)	470°C (878°F)	580°C (1076°F)	450°C (842°F)	560°C (1040°F)

¹ Measured using 3-point bend method.

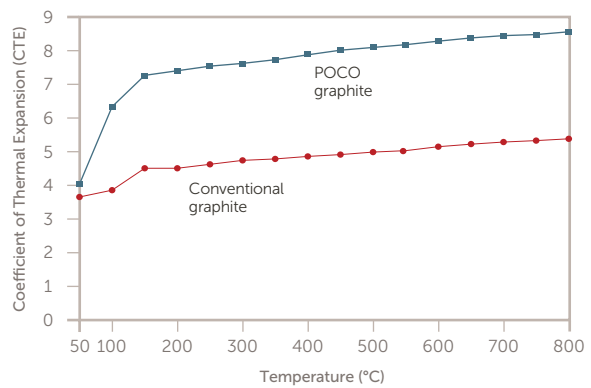
² Approximate values taken at room temperature; as temperature increases, thermal conductivity decreases.

³ Oxidation threshold defined as temperature at which oxidation weight loss after 24 hrs is approximately 1% (size 0.5" × 0.5" × 1").

Pore Distribution



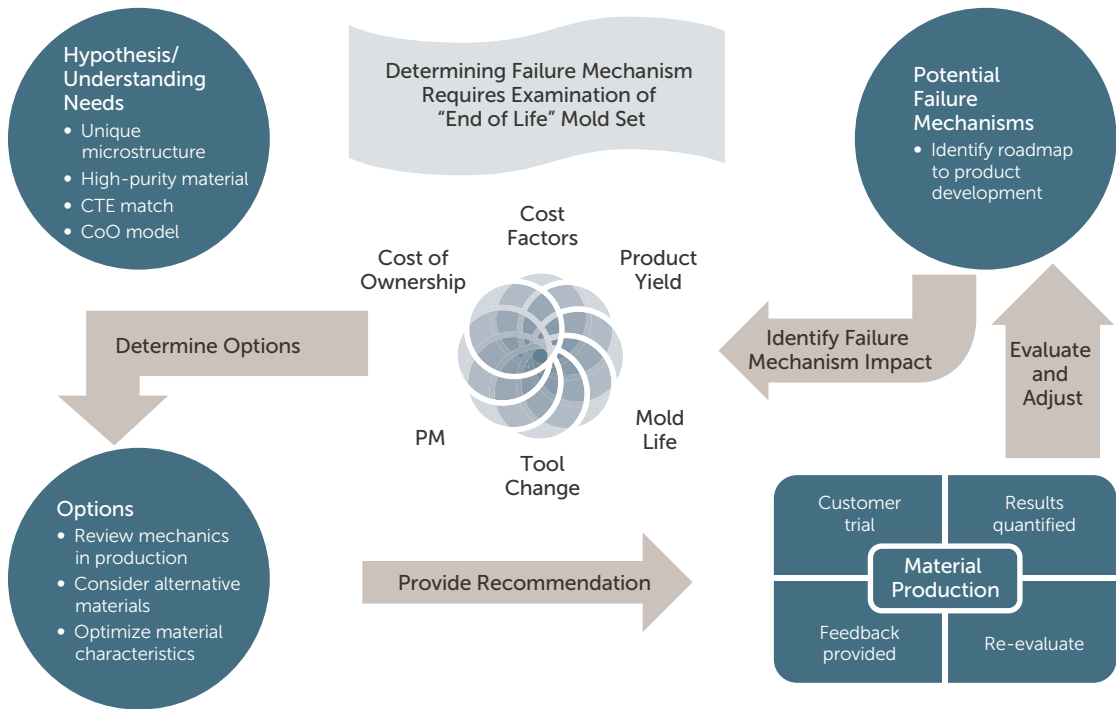
Coefficient of Thermal Expansion



TECHNICAL SOLUTIONS PROVIDER

- Committed participant to major industries
- Material development road mapping
- High temperature technical/application expertise
- Carbon expertise
- Solutions development for specific applications
- Vertical integration
- World class material analysis capability
- Global reach with market leadership customer focused
- History of customized differentiated solutions
- Experienced and dedicated support team
- Proven cost of ownership record

Material Development and Partnering Philosophy



FOR MORE INFORMATION

Please call your Regional Customer Service Representative or Distributor today to learn what POCO’s GLASSMATE products can do for you. Visit poco.com and select the Contacts link for the location nearest you.

TERMS AND CONDITIONS OF SALE

All purchases are subject to Poco Graphite’s Terms and Conditions of Sale. To view and print this information, visit poco.com and select the [Terms & Conditions](#) link.



Corporate Headquarters
 129 Concord Road
 Billerica, MA 01821
 USA

Customer Service
 Tel +1 952 556 4181
 Fax +1 952 556 8022
 Toll Free 800 394 4083

Entegris®, the Entegris Rings Design®, and other product names are trademarks of Entegris, Inc. as listed on entegris.com/trademarks. All third-party product names, logos, and company names are trademarks or registered trademarks of their respective owners. Use of them does not imply any affiliation, sponsorship, or endorsement by the trademark owner.

©2016-2018 Entegris, Inc. | All rights reserved. | Printed in the USA | 6206-10195ENT-1218