



CUSTOM INTEGRA® VALVES

Generic molded bodies provide custom solutions quickly and cost effectively



4-port molded bodies are the building blocks of custom Integra valves

Overview

Entegris offers custom-build Integra® valves for use in valve manifold boxes and specific applications like slurry distribution, bulk chemical distribution, wet processing and sampling. The new 4-port molded valve bodies enable us to customize valves with unique flow paths and geometries for you quickly, and at a lower cost than fully machined custom valves.

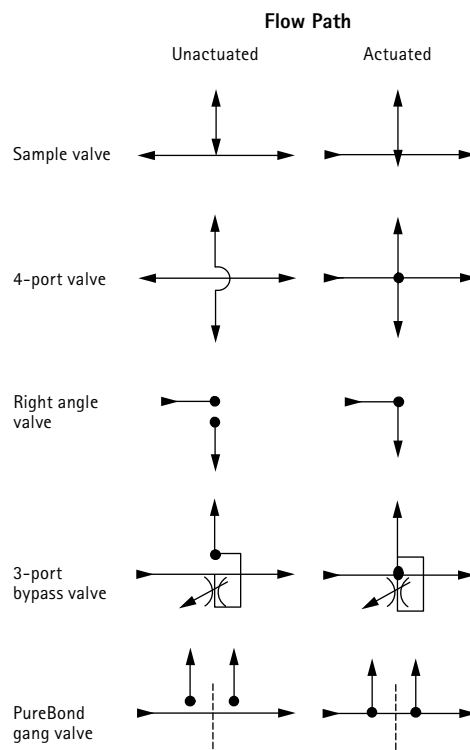
Enhanced Custom Capability

Starting with a generic, or blank, 4-port molded body, we can easily machine port configurations and flow paths according to your unique specifications. Using these as building blocks for specific configurations increases your design/application flexibility. You can configure valve bodies with any normally open, normally closed, 1/4-turn manual or multi-turn manual actuator. And in addition to custom flow paths, you can mix and match 1/2" and 3/4" Flaretek® and PureBond® port connections in a

number of unique combinations. Furthermore the molded body yields a smaller footprint than an equivalent valve body machined from a billet or block of material.

Custom molded valve bodies are compatible with reliable Integra valve operators and are fully tested and qualified. Additional innovative custom solutions can be developed faster due to this in-house capability. New Integra 1/2" sampling and 4-port valves are examples of such customization.

Custom Flow Path Examples



Molded valve bodies enable us to provide you customized solutions quickly and cost effectively, lowering your cost of ownership.

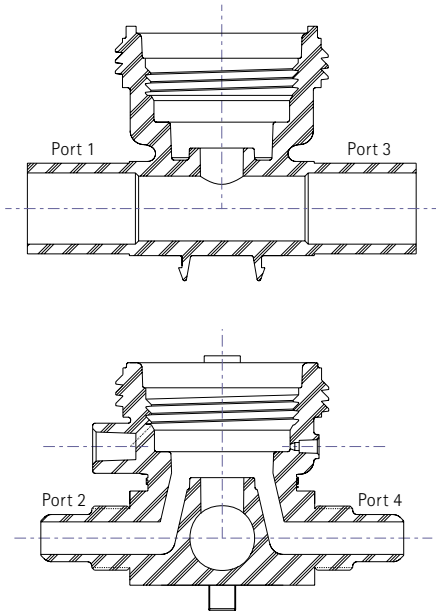
Custom Build Process

The process of building Integra valves to your specifications is simple.

1. We start with a blank molded body.



2. Then, we configure the flow path and port connections to your specifications.



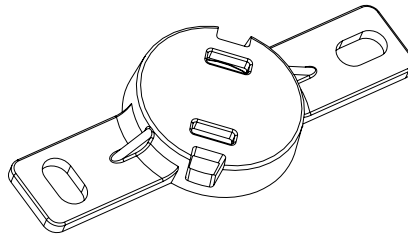
3. And finally, we install the operator of your choice and test the valve for functionality.



The valve used in this example is a 1/4-turn manual right angle 2-way valve with a 3/4" Flaretek port connection on the inlet and a 1/2" Flaretek port connection on the outlet.

Mounting Bases

Each custom Integra valve is equipped with a polyethylene mounting base for easy installation.



Sensing Options

You may automate your control process by incorporating Espy® position indication to pneumatic normally closed Integra valves. A leak detection option is also available using Espy sensors. Contact your Entegris representative for details.

Ordering Information

To begin the quoting process for your custom valve contact your local Entegris distributor, or Entegris, Inc. with your configuration requirements.

For More Information

Please call your Regional Customer Service Center today to learn what Entegris can do for you. Visit www.entegris.com and select the Customer Service link for the center nearest you.

Terms and Conditions of Sale

All purchases are subject to Entegris' Terms and Conditions of Sale. To view and print this information, visit www.entegris.com and select the Legal Notices link from the footer.

Entegris®, the Entegris Rings Design®, Espy®, Flaretek®, Integra® and PureBond® are registered trademarks of Entegris, Inc.

ENTEGRIS, INC.

Corporate Headquarters | 129 Concord Road | Billerica, MA 01821 USA
Customer Service Tel. +1 952 556 4181 | Customer Service Fax +1 952 556 8022
In North America 800 394 4083 | www.entegris.com

©2003–2013 Entegris, Inc. All rights reserved Printed in USA 3210-1430ENT-0313

