

# EP PFA 1¼"

## Manual and Pneumatic Valves

*Provide reliable service in ultra-clean and corrosive chemical delivery systems*

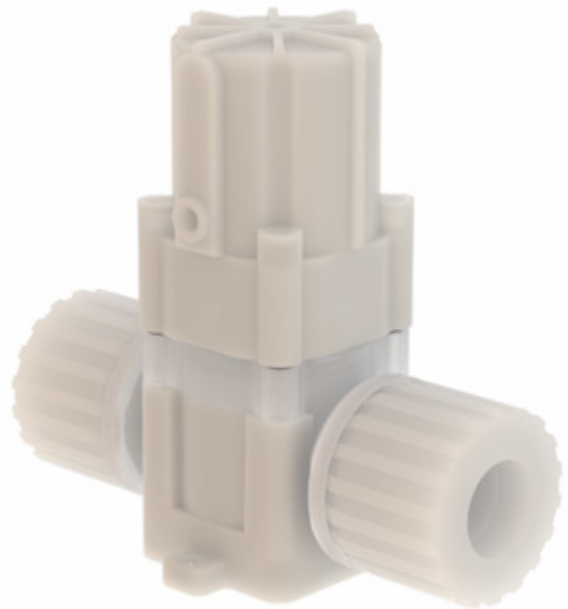
Our EP PFA 1¼" valves are designed to provide ultra-clean performance and long-term sealing reliability in chemical delivery systems. Constructed with wetted PFA and PTFE materials, these valves offer excellent resistance to corrosive chemistries while maintaining system purity. Available in a 2-way configuration with manual multi-turn or pneumatic actuation and PrimeLock® or EP Flare port connections, our portfolio of EP PFA 1¼" valves will meet your most demanding chemical delivery needs in semiconductor and flat panel display applications.

### APPLICATIONS

- High-purity, corrosive chemical handling within the semiconductor
- Chemical line sizes 1¼"

### FEATURES & BENEFITS

- Visual valve position indication for easy on/off control
- PFA and PTFE wetted materials of construction provide chemical resistance to corrosive chemicals
- A variety of connections including PrimeLock® and EP Flare
- Manual valves are available with an optional safety lock-out cap



## SPECIFICATIONS

<b>Materials</b>	All wetted parts	PFA, PTFE
	Nonwetted parts	PVDF, PP, PE, Viton®, Stainless steel 304
<b>Pressure range</b>	100 psig (7kg/cm <sup>2</sup> ) @ 21°C (70°F) fluid temperature	
	64 psig (4.5kg/cm <sup>2</sup> ) @ 90°C (194°F) fluid temperature	
<b>Temperature range</b>	21° to 90°C (70° to 194°F)	
<b>Pneumatic supply port (pneumatic version only)</b>	1/8" PT	
<b>Pneumatic supply pressure (pneumatic version only)</b>	85 psig (6kg/cm <sup>2</sup> ) maximum	

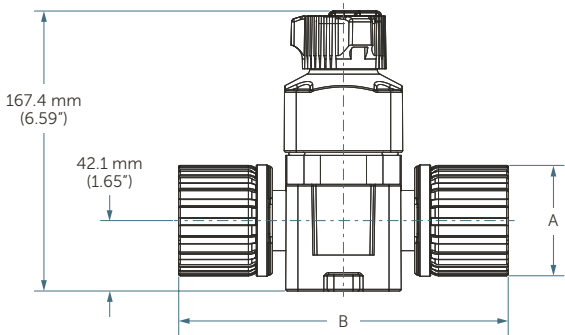
## RELIABILITY TESTING

TEST TYPE	TEST CONDITIONS	TEST CRITERIA	TEST RESULT
<b>Actuation cyclic testing</b>	100 psig (7kg/cm <sup>2</sup> ) DI water @ 23°C (73°F)	No external media leakage and port-to-port seal for 1 million cycles	PASS
<b>Pressure envelope cyclic testing</b>	149 psig (10.5kg/cm <sup>2</sup> ) DI water @ 23°C (73°F)	No external media leakage for 1 million cycles @ 1.5 time rated pressure applied to each media port	PASS
<b>Burst pressure</b>	DI water pressure increased until leakage detected. Test performed @ 23°C (73°F)	Burst pressure must be >2 times rated pressure	PASS

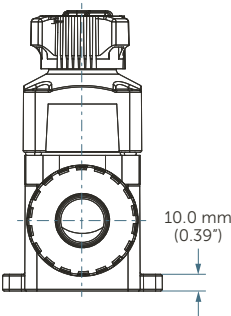
**DIMENSIONS**

EP PFA 1¼" Manual Valve

Front View



Side View

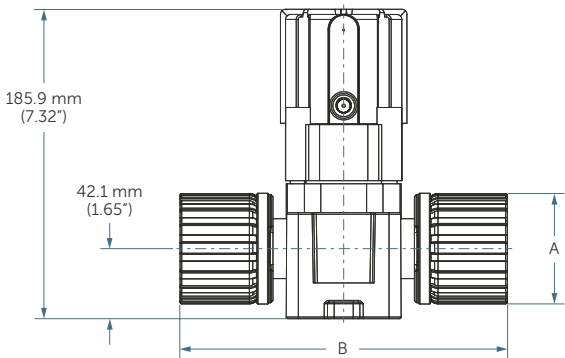


Dimensions

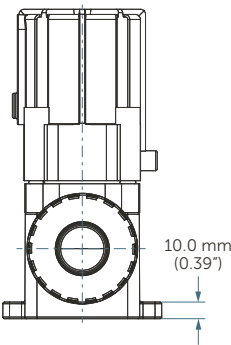
Port connection	Flow factor	A	B
1¼" EP Flare	12.6 C <sub>v</sub> (10.9 K <sub>v</sub> )	62.0 mm (2.44")	192 mm (7.55")
1¼" PrimeLock	12.6 C <sub>v</sub> (10.9 K <sub>v</sub> )	66.3 mm (2.61")	197 mm (7.75")

EP PFA 1¼" Pneumatic Valve

Front View



Side View



Dimensions

Port connection	Flow factor	A	B
1¼" EP Flare	12.6 C <sub>v</sub> (10.9 K <sub>v</sub> )	62.0 mm (2.44")	192 mm (7.55")
1¼" PrimeLock	12.6 C <sub>v</sub> (10.9 K <sub>v</sub> )	66.3 mm (2.61")	197 mm (7.75")

## ORDERING INFORMATION

### PFA 1¼" Manual and Pneumatic Valves

Part number	Actuation	Port connection	Fasteners
PLMV-F20	Manual multi-turn	1¼" EP Flare	Stainless steel
PLMV-K20	Manual multi-turn	1¼" PrimeLock	Stainless steel
PLPV-F20	Pneumatic normally closed	1¼" EP Flare	Stainless steel
PLPV-K20	Pneumatic normally closed	1¼" PrimeLock	Stainless steel

### FOR MORE INFORMATION

Please call your Regional Customer Service Center today to learn what Entegris can do for you. Visit [entegris.com](http://entegris.com) and select the [Contact Us](#) link to find the customer service center nearest you.

### TERMS AND CONDITIONS OF SALE

All purchases are subject to Entegris' Terms and Conditions of Sale. To view and print this information, visit [entegris.com](http://entegris.com) and select the [Terms & Conditions](#) link in the footer.



#### Corporate Headquarters

129 Concord Road  
Billerica, MA 01821  
USA

#### Customer Service

Tel +1 952 556 4181  
Fax +1 952 556 8022  
Toll Free 800 394 4083

Entegris®, the Entegris Rings Design®, and other product names are trademarks of Entegris, Inc. as listed on [entegris.com/trademarks](http://entegris.com/trademarks). All third-party product names, logos, and company names are trademarks or registered trademarks of their respective owners. Use of them does not imply any affiliation, sponsorship, or endorsement by the trademark owner.

©2025 Entegris, Inc. | All rights reserved. | Printed in the USA | 3273-14366ENT-0925